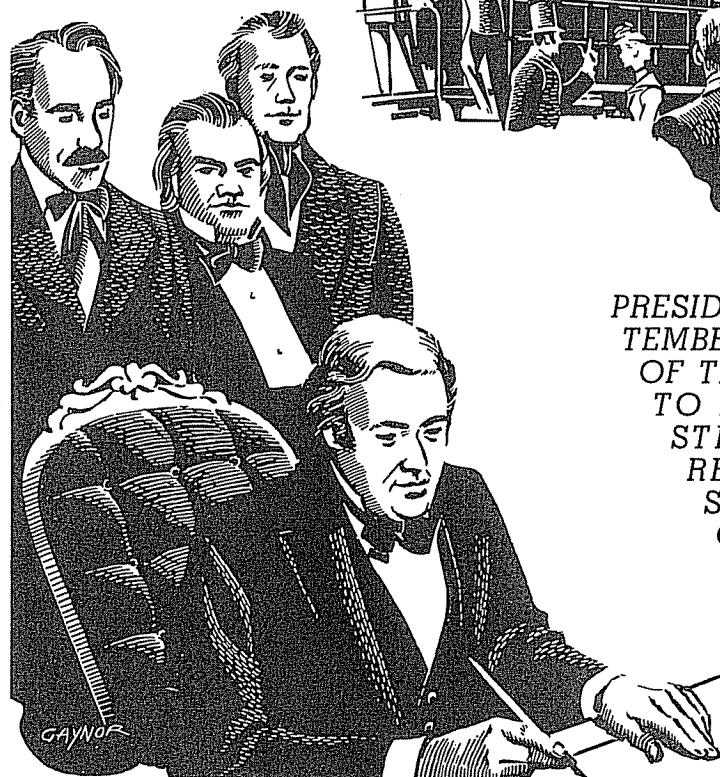
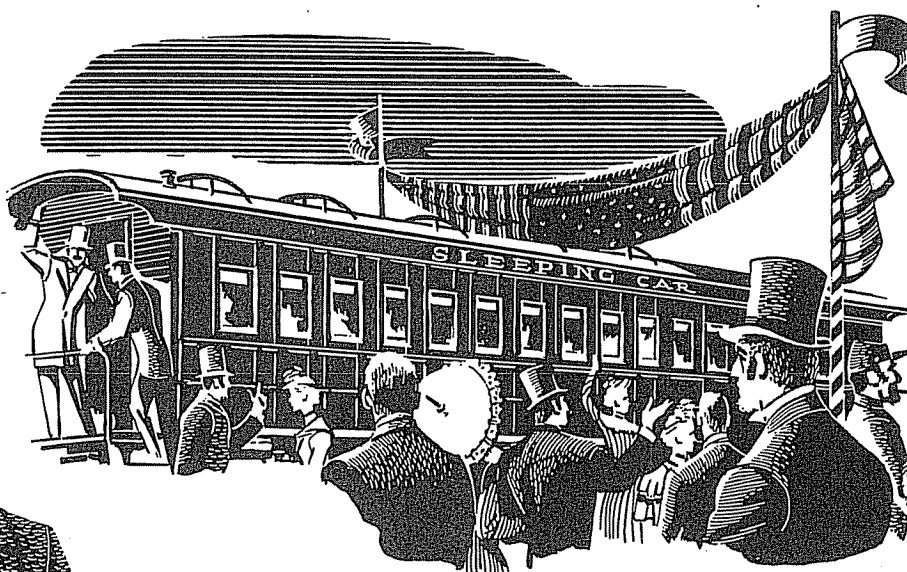


September IN RAILROAD HISTORY



TELEGRAPH FIRST
USED IN DISPATCH-
ING TRAINS—SEP-
TEMBER 22, 1851.

INITIAL TRIP
OF GEORGE M.
PULLMAN'S FIRST
SLEEPING CAR—
SEPTEMBER 1, 1859



PRESIDENT MILLARD FILLMORE — SEP-
TEMBER 20, 1850 — SIGNED THE FIRST
OF THE FEDERAL LAND-GRANT ACTS
TO ENCOURAGE RAILWAY CON-
STRUCTION IN UNDEVELOPED
REGIONS OF THE WEST AND
SOUTH. LESS THAN 10 PER CENT
OF U. S. RAILROAD MILEAGE
WAS THUS AIDED. IN RETURN,
RAILROADS CARRIED GOVERN-
MENT TRAFFIC AT REDUCED
RATES, SAVING THE GOVERN-
MENT MANY TIMES THE VALUE
OF THE LANDS GRANTED.

September

IN RAILROAD HISTORY

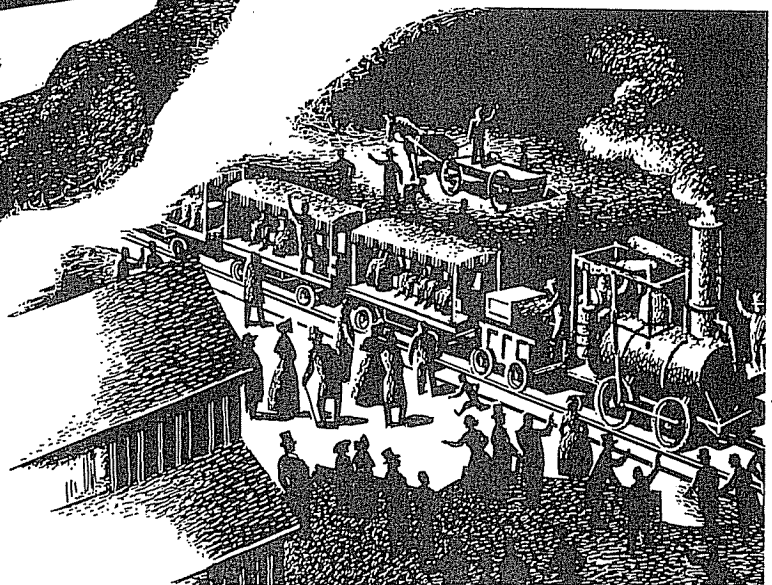


GROUND-BREAKING
CEREMONY AT DAVENPORT,
IOWA, SEPTEMBER 1, 1854,
FOR FIRST RAILROAD
BRIDGE ACROSS THE
MISSISSIPPI RIVER.



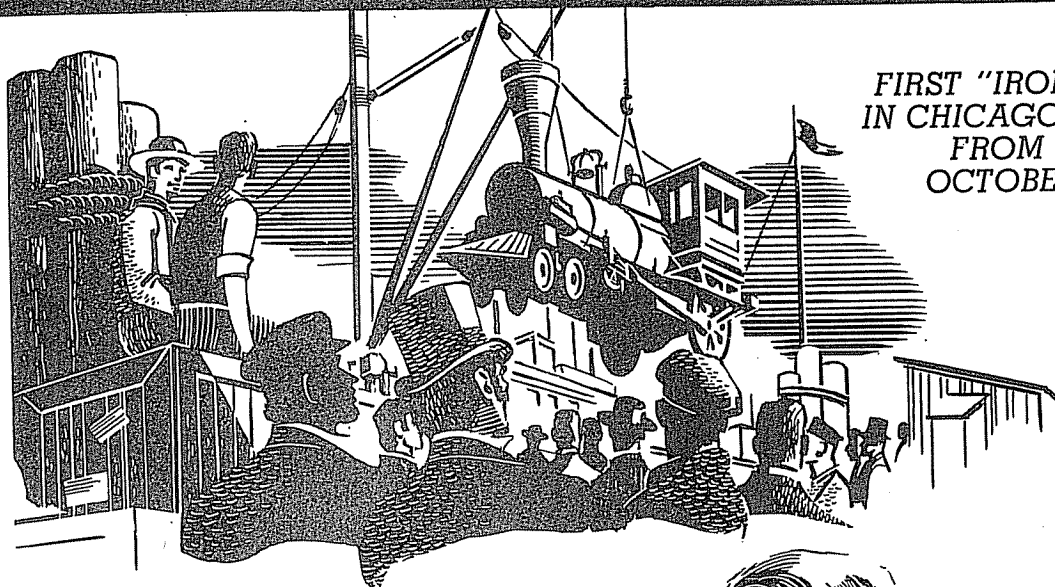
MASTER CAR-BUILDERS'
ASSOCIATION—FORERUNNER
OF ASSOCIATION OF AMERICAN
RAILROADS—ORGANIZED AT
ALTOONA, PENNSYLVANIA,
SEPTEMBER 18, 1867, TO
CONDUCT RESEARCH AND
PROMOTE STANDARDIZATION
OF EQUIPMENT.

FIRST LOCOMOTIVE IN
MISSISSIPPI VALLEY—
THE "PONCHARTRAIN"—
MADE ITS INITIAL RUN
FROM NEW ORLEANS TO
LAKE PONCHARTRAIN,
SEPTEMBER 17, 1832.



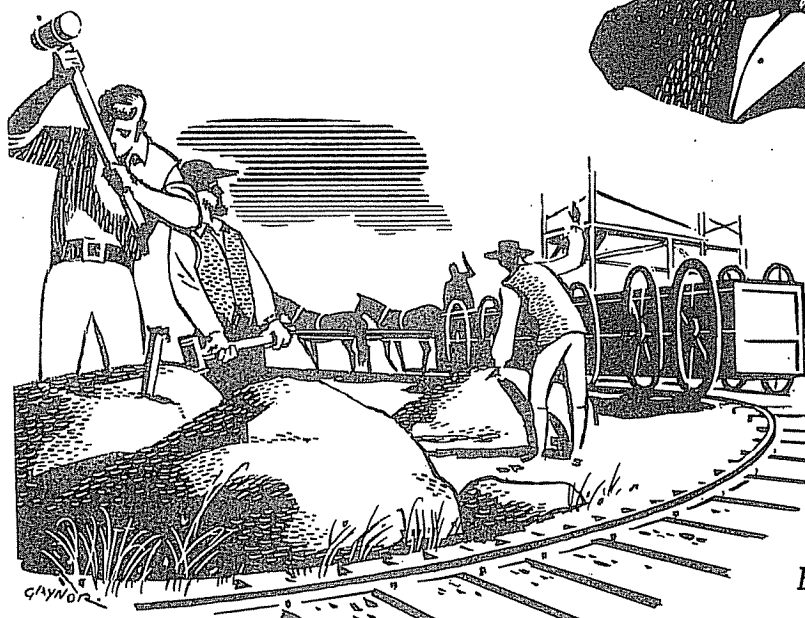
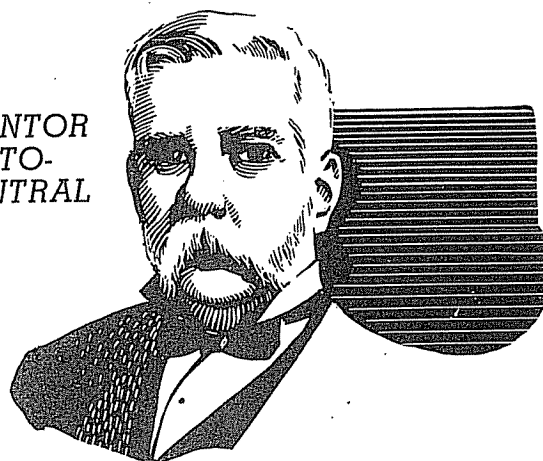
October

IN RAILROAD HISTORY



FIRST "IRON HORSE"
IN CHICAGO ARRIVED
FROM THE EAST
OCTOBER 10, 1848.

GEORGE WESTINGHOUSE, INVENTOR
OF THE FIRST SUCCESSFUL AUTO-
MATIC AIR BRAKE, BORN AT CENTRAL
BRIDGE, N.Y., OCTOBER 6, 1846.



FIRST INCORPORATED
RAILROAD TO PER-
FORM TRANSPORTA-
TION SERVICE IN THE
UNITED STATES BEGAN
OPERATIONS AT
QUINCY, MASS.,
OCTOBER 7, 1826.
HORSES PROVIDED
THE MOTIVE POWER.
THE ROAD CONVEYED
GRANITE FOR USE IN
THE CONSTRUCTION OF
BUNKER HILL MONUMENT.

October

IN RAILROAD HISTORY



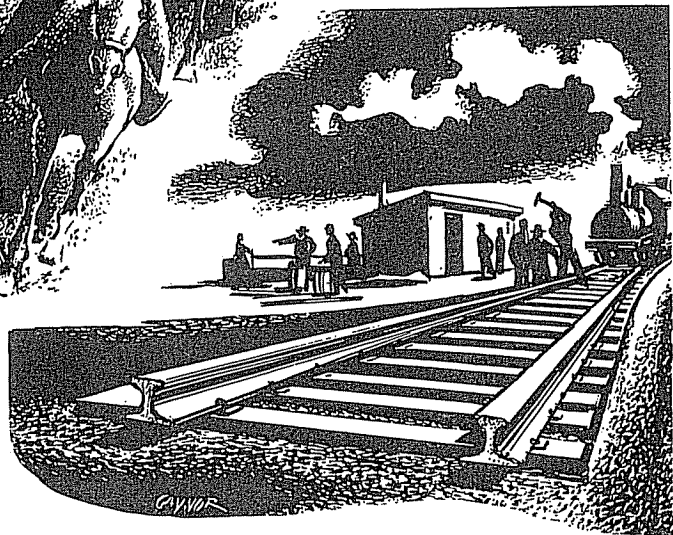
FIRST PERMANENT PENSION SYSTEM FOR RETIRED RAILWAY EMPLOYEES ESTABLISHED OCTOBER 1, 1884. EIGHTY-FOUR RAILROADS, EMBRACING 90% OF ALL RAILWAY EMPLOYEES, HAD SUCH SYSTEMS BEFORE THE RAILROAD RETIREMENT ACT WAS PASSED IN 1937.



FIRST TRAIN ROBBERY IN AMERICAN HISTORY COMMITTED BY RENO GANG IN SOUTHERN INDIANA, OCTOBER 6, 1866.



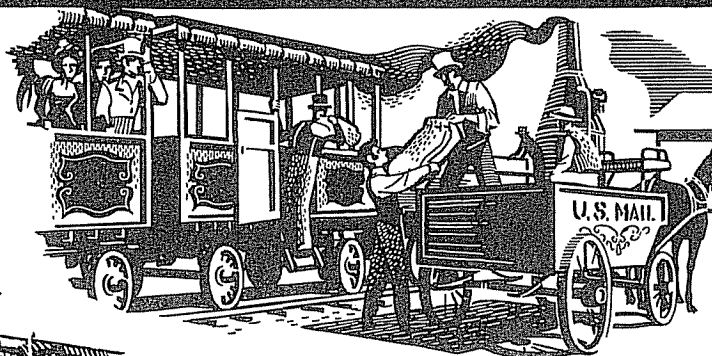
FIRST RAILROAD TO BE LAID WITH "T" RAIL—ONE OF THE FOUNDATIONS OF MODERN RAILROADING—OPENED FOR BUSINESS IN NEW JERSEY OCTOBER 9, 1832.



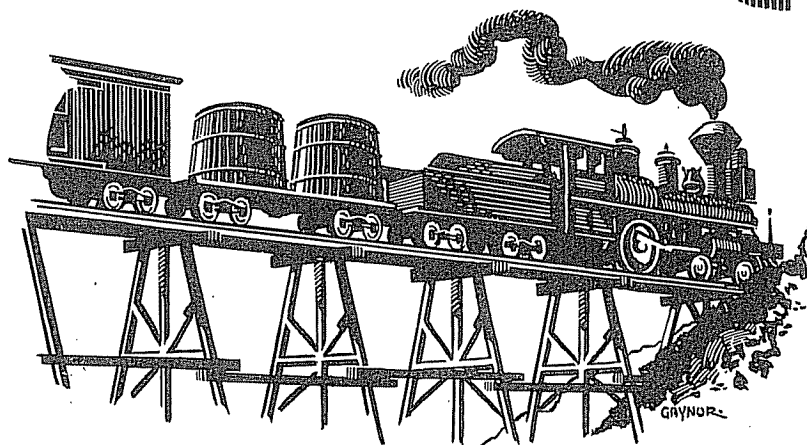
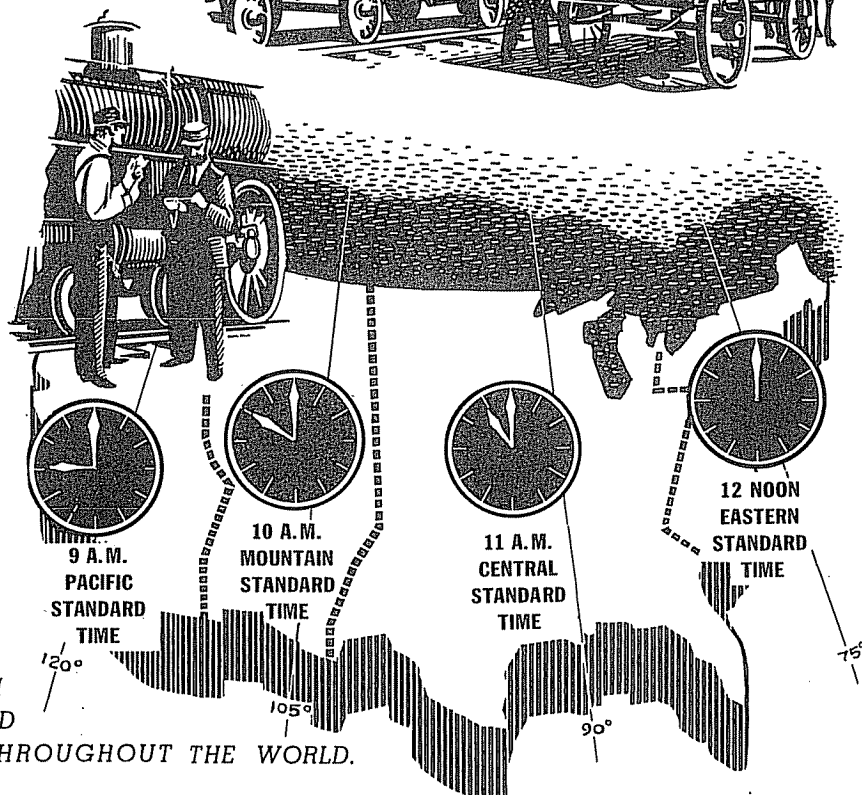
November

IN RAILROAD HISTORY

THE FIRST KNOWN INSTANCE OF UNITED STATES MAIL BEING TRANSPORTED BY RAILROAD WAS FROM CHARLESTON, SOUTH CAROLINA, NOVEMBER, 1831.



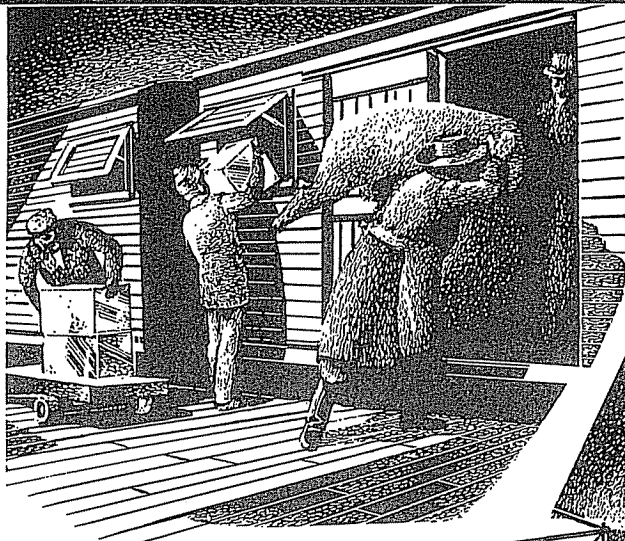
ON NOVEMBER 18, 1883, RAILROADS THROUGHOUT THE UNITED STATES ADOPTED STANDARD TIME, REPLACING NUMEROUS LOCAL TIMES BY WHICH TRAINS WERE OPERATED. STANDARD TIME WAS DIVIDED INTO FOUR ZONES BASED ON SUN TIME AT THE 75TH, 90TH, 105TH AND 120TH MERIDIANS WEST OF GREENWICH. THE TIME SYSTEM THUS INITIATED WAS PROMPTLY ACCEPTED BY CITIES AND TOWNS FROM COAST TO COAST AND EVENTUALLY SPREAD THROUGHOUT THE WORLD.



FIRST SHIPMENT OF PETROLEUM IN A TANK CAR — A FLAT CAR FITTED WITH TWO WOODEN TANKS RESEMBLING INVERTED TUBS—ORIGINATED AT TITUSVILLE, P.A., NOVEMBER 1, 1865.

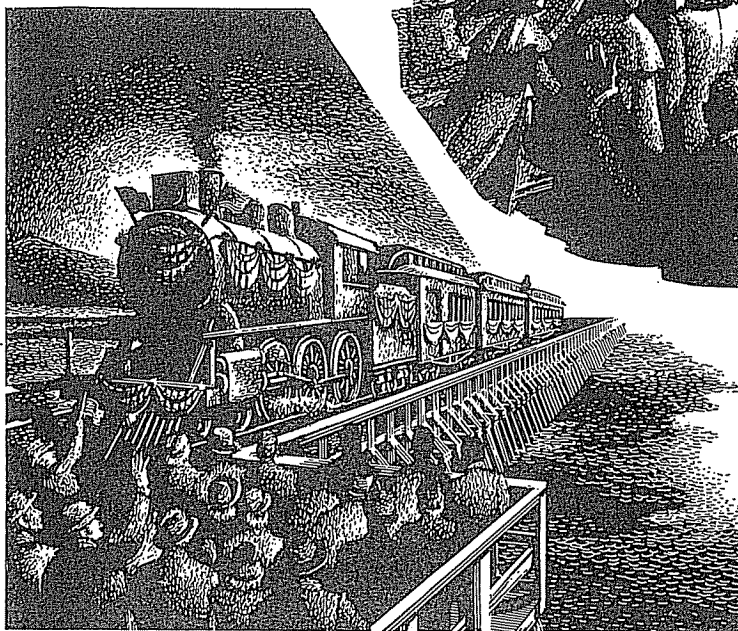
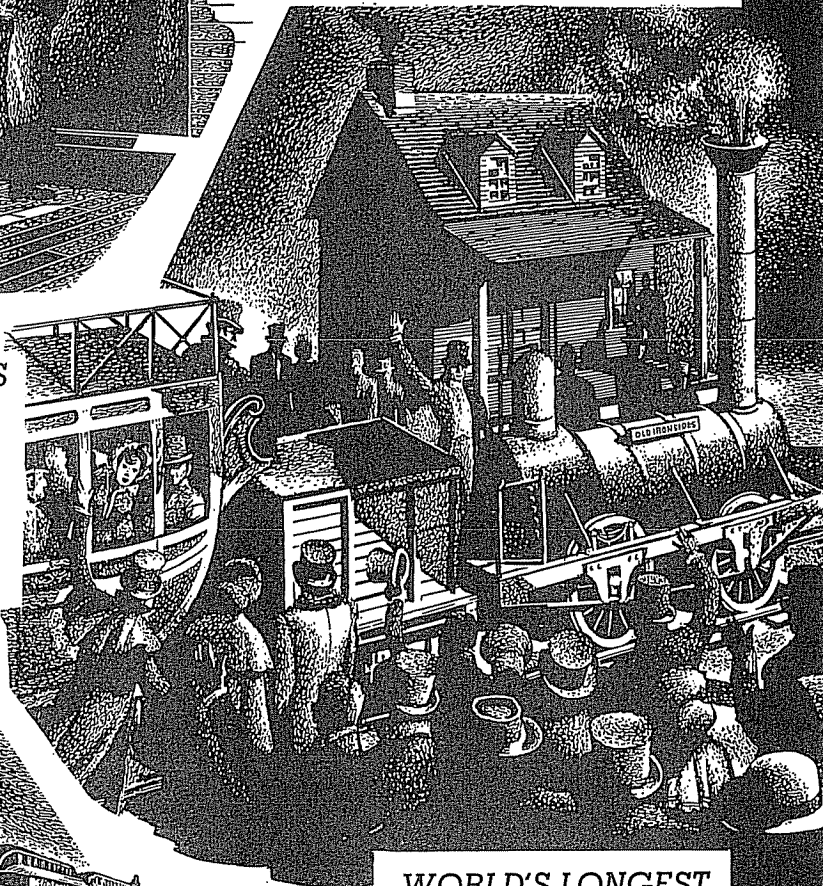
November

IN RAILROAD HISTORY



FIRST PATENT FOR A
REFRIGERATOR CAR ISSUED
TO J. B. SUTHERLAND
OF DETROIT, MICHIGAN,
NOVEMBER 26, 1867.

MATTHIAS BALDWIN'S
FIRST LOCOMOTIVE,
"OLD IRONSIDES",
MADE ITS INITIAL
RUN FOR A DISTANCE
OF 6 MILES,
NOVEMBER 23, 1832.

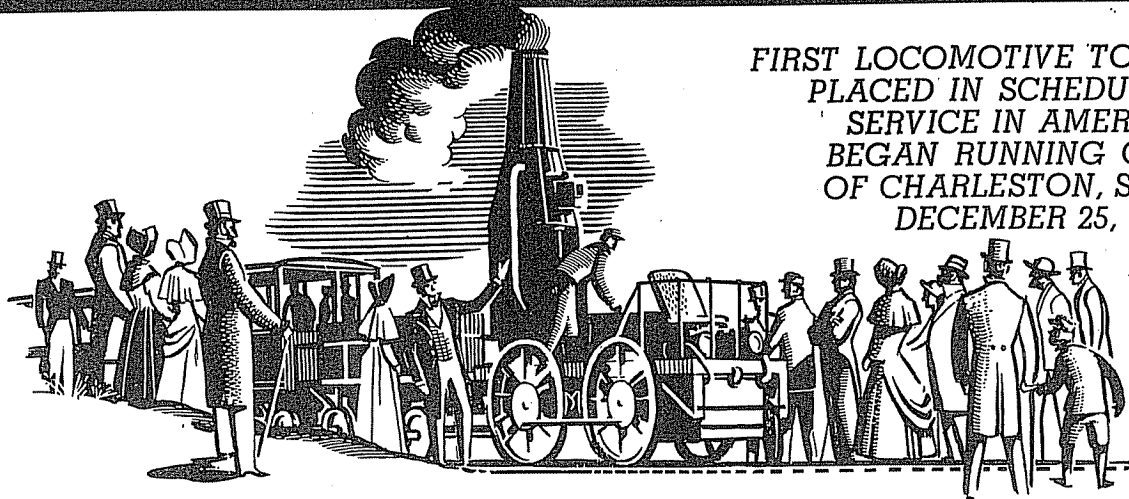


WORLD'S LONGEST
TRESTLE BRIDGE,
THE LUCIN CUTOFF
ACROSS GREAT
SALT LAKE, OPENED
FOR TRAFFIC
NOVEMBER 26, 1903.
IT IS TWELVE
MILES IN LENGTH.

CAYNOR

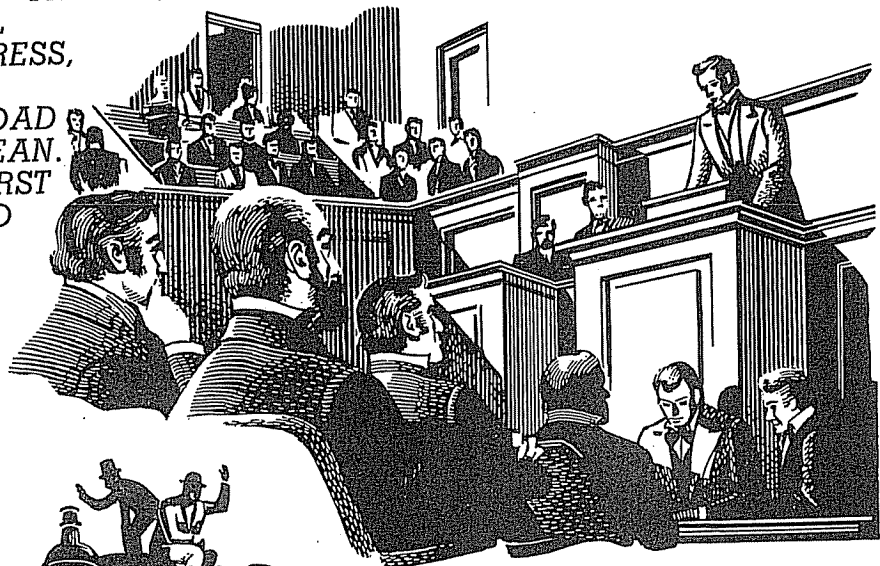
December

IN RAILROAD HISTORY



FIRST LOCOMOTIVE TO BE
PLACED IN SCHEDULED
SERVICE IN AMERICA
BEGAN RUNNING OUT
OF CHARLESTON, S. C.,
DECEMBER 25, 1830

PRESIDENT ZACHARY TAYLOR,
IN HIS FIRST ANNUAL
MESSAGE TO CONGRESS,
DECEMBER 4, 1849,
PROPOSED A RAILROAD
TO THE PACIFIC OCEAN.
TAYLOR WAS THE FIRST
CHIEF EXECUTIVE TO
ADVOCATE SUCH A
PROJECT:



FIRST LOCOMOTIVE
AND TRAIN WEST
OF THE MISSISSIPPI
RIVER MADE ITS
INITIAL TRIP A
FEW MILES OUT
OF ST. LOUIS
DECEMBER 9, 1852

December

IN RAILROAD HISTORY



IN A NEWSPAPER AD, DECEMBER 10, 1813, OLIVER EVANS OF PHILADELPHIA PROPOSED BUILDING A RAILROAD BETWEEN NEW YORK AND PHILADELPHIA, GUARANTEEING A TRAIN SPEED OF 12 MILES AN HOUR.



THE HUEY LONG BRIDGE, LONGEST STEEL RAILROAD BRIDGE IN THE UNITED STATES, SPANNING THE MISSISSIPPI RIVER ABOVE NEW ORLEANS, OPENED FOR TRAFFIC DECEMBER 16, 1935. IT IS 23,235 FEET IN LENGTH.

FIRST RAIL ROUTE LINKING BOSTON AND NEW YORK COMPLETED DECEMBER 29, 1848. ROUTE WAS OVER 5 RAILWAY LINES, BUT ONLY THREE CHANGES OF CARS WERE NECESSARY.



