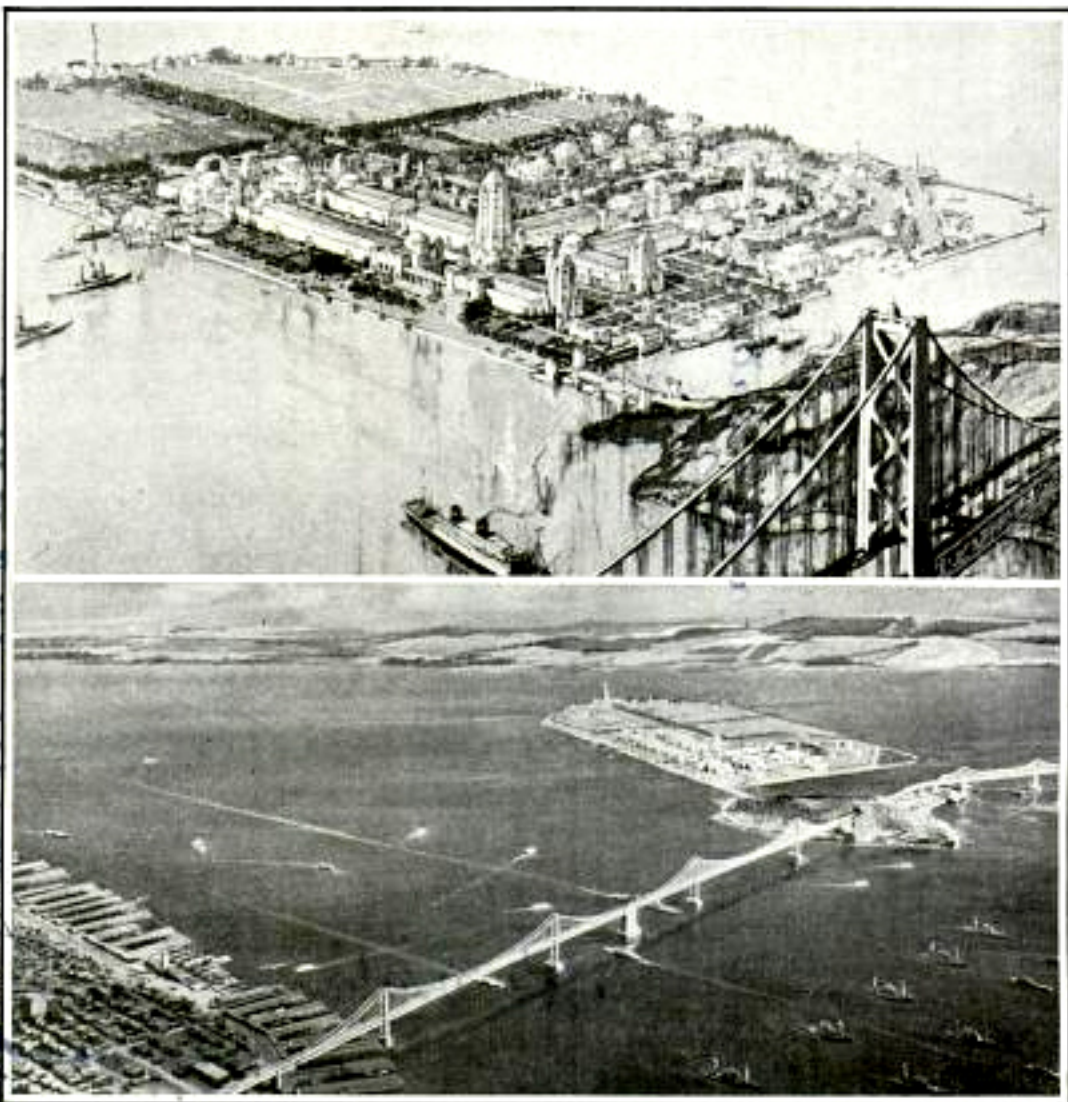


## Man-Made Island Taking Shape in Bay



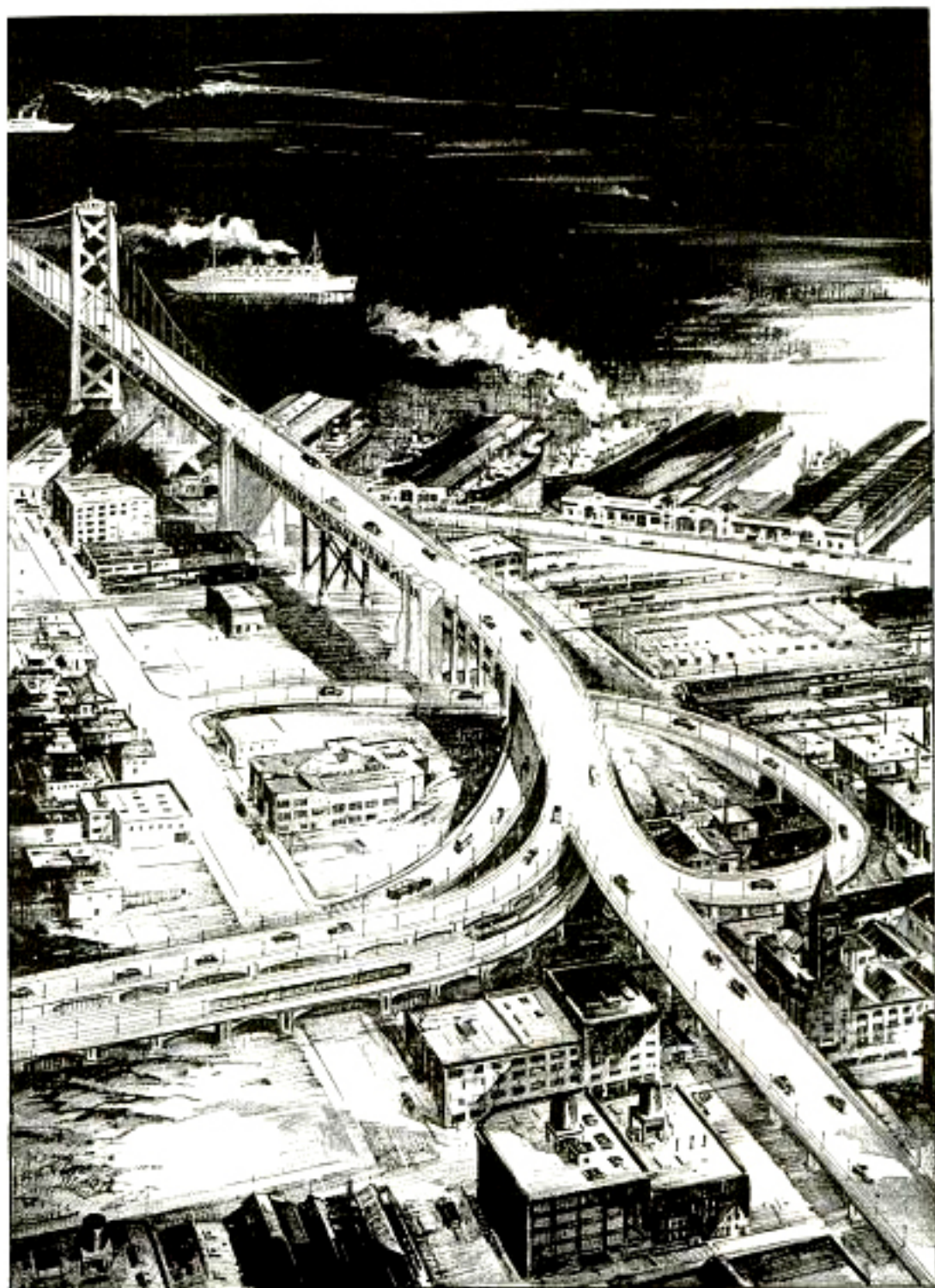
*Sketches show how face of San Francisco bay will be changed by new bridge and tower-studded exposition city to be built on man-made land adjoining Yerba Buena island*

Up from the floor of San Francisco bay an island is rising, destined to be first the site of the San Francisco International Exposition and later an airport where transcontinental planes will discharge passengers just ten minutes away from the heart of the city. It may, too, eventually serve as the American terminal for transpacific air routes to the Orient. The exposition will celebrate completion of the trans-bay bridge. Within a year the filling of land for an island more than a mile long and nearly two-thirds of a mile wide is ex-

pected to be completed. A protective sea wall will inclose the 385-acre isle, midway between Oakland and San Francisco and just north of Yerba Buena island, whose shoulder is crossed by the suspension bridge. Giant dredges and sand suckers must transfer to this new island 18,000,000 cubic yards of fill. On the made land a world's fair city of beautiful buildings, towers, domes, plazas and avenues is planned, all to be dominated by a great tower. Near by will be anchorage for naval vessels, and a yacht harbor.



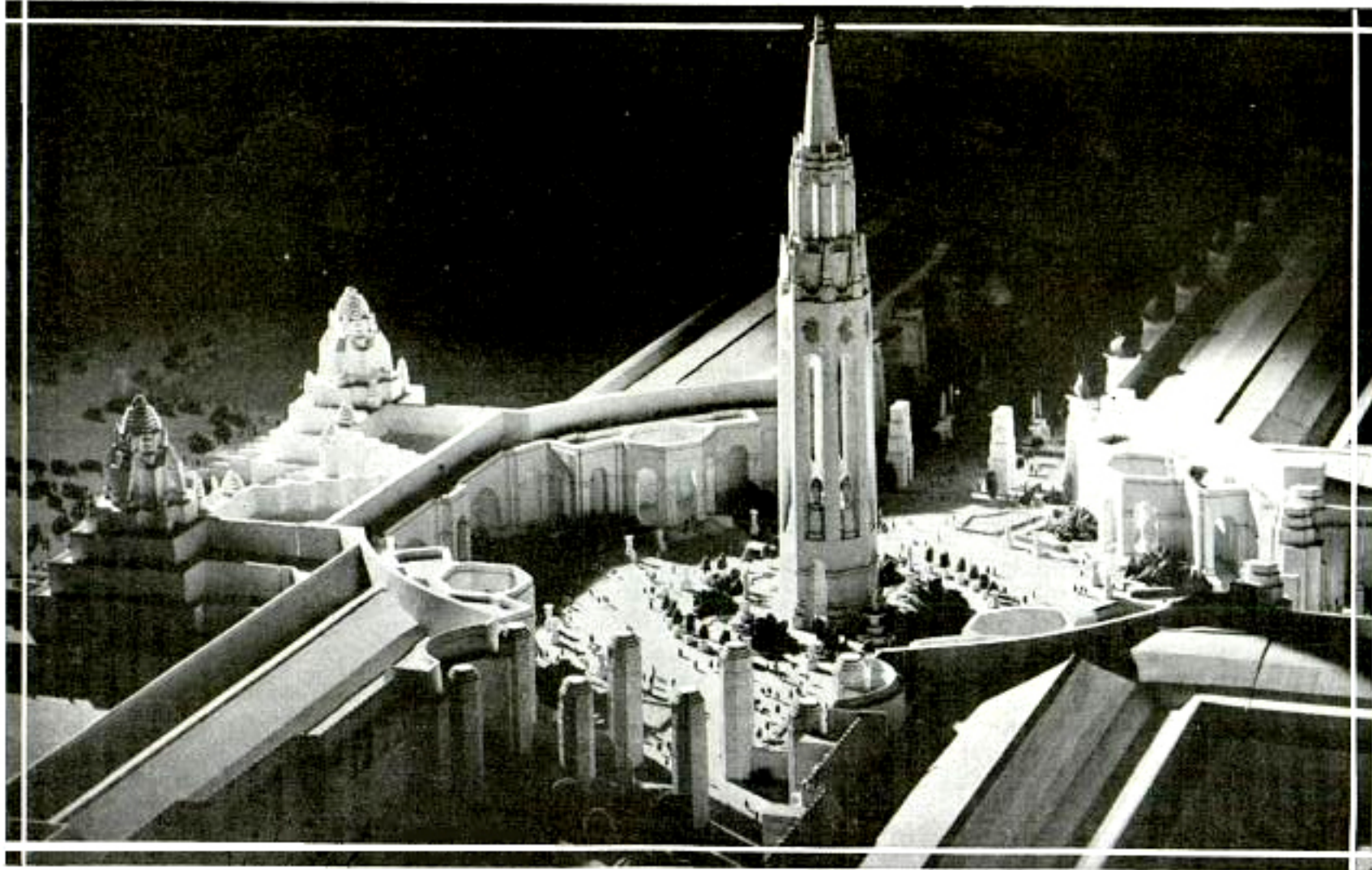
## Is Site of San Francisco World's Fair



Photos courtesy Schmidt Lithograph Co.

*Swirling lanes of traffic climb to San Francisco end of bridge from whose shoulder on Yerba Buena island visitors will look down on exposition commemorating completion of span*





*Skilful illumination of a model resulted in what appears to be an aerial view of the Golden Gate Exposition, scheduled to open in 1939. Note how the lighting enhances the general effect by throwing the main tower into prominence. Main gate is at left*

## Temple of Music Among Exposition Wonders



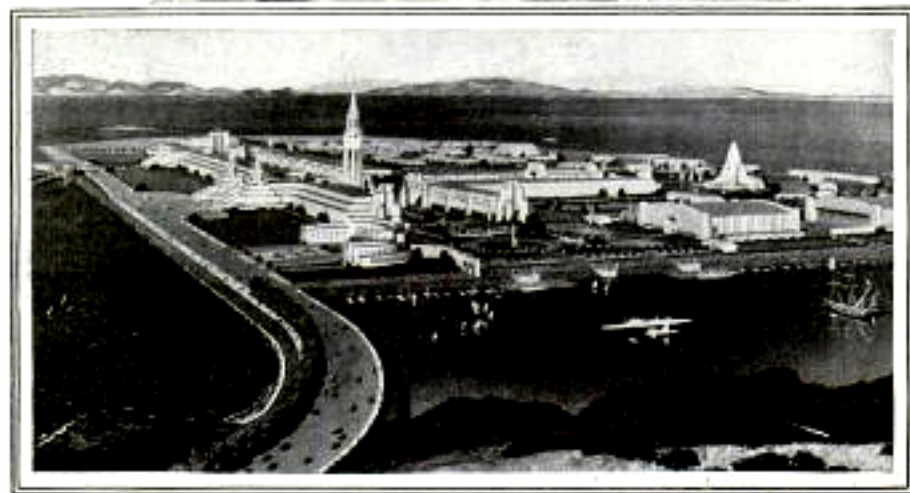
Top, drawing of the Temple of Music which will be among the wonders of the Golden Gate Exposition at San Francisco in 1929. Floating stands will approach the temple at the climax of performances. (See story on opposite page.) Bottom, air view of exposition island shows progress of work. Note the big bridge affording access to the site from either side.

## Floating Grandstands at Fair to Carry Audience

Among the wonders of the Golden Gate exposition in San Francisco in 1939 will be pontoon grandstands on which large audiences will be drawn across a lake by means of cables. As the climax of the performance approaches, the spectators on the floating stands will be slowly drawn toward the proscenium of the Temple of Music. The distance between the stands and the stage at the start of the performance will be 600 feet. Acting as a sounding board for the performance will be the 200-foot beehive shaped tower of the temple, with fifty-foot pylons flanking each wing. From this backdrop a broad series of glass steps will cover a brilliantly lighted cascading waterfall. The immense stage extending out into a lagoon just above the water's level will accommodate a cast of 3,000 performers. A curtain of steam, with colored lights playing upon its surface, will veil the stage until the start of the performance. Approximately 25,000 seats will be provided on the floating stands and stadia surrounding the lake.



## Thirty-Five Foot Model Is Fair in Miniature

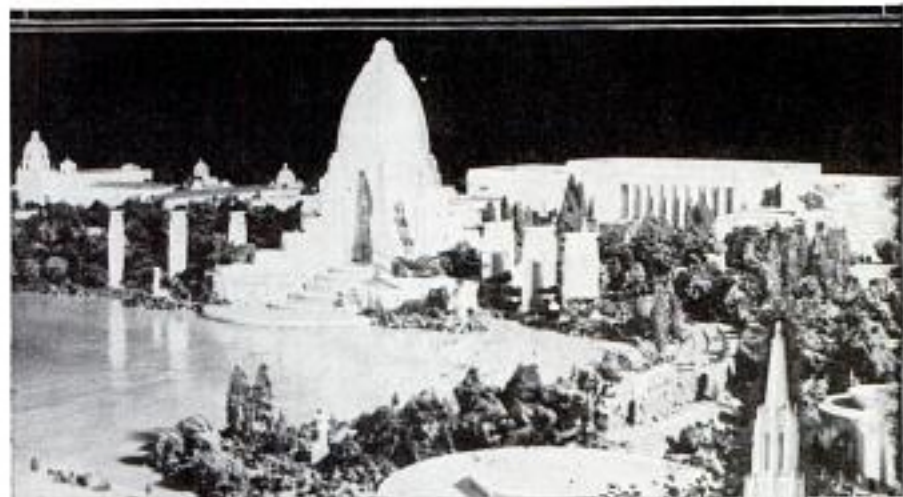


*Top, workers completing model of exposition. Note tiny figures of spectators and of autos. Bottom, how the exposition will look from the air upon completion of all the buildings*

Tiny lifelike figures, 5,000 autos much smaller than toy cars, many miles of esplanades, hedges, roads and canals are among the features of a thirty-five foot model of the 1939 Golden Gate Exposition. Every part of the exposition, and the man-made island on which it will be constructed, is shown by the model. Each tiny figure walking about the 400-acre grounds, re-

duced to a scale of one-sixteenth of an inch to the foot, is made of clay. Spectators seated in the model's athletic field bleachers are painted grains of rice. Under the artists' hands, crinkled Cellophane and spun glass have been converted into ornamental fountains. Carefully torn bits of animal and vegetable sponge have been made into trees. The model's palm trees

## Model Shows Giant Towers of California Fair



*Top, model of Temple of Music to be built on site of Golden Gate exposition, with federal building in background. Below, how main entrance will appear, flanked by "elephant towers"*

Treasure Island's great pyramids and towers, blending oriental with modern architecture, are seen in the plaster models that give a preview of the Golden Gate exposition of 1939. On the brink of the Lake of All Nations rises the domelike tower of the Temple of Music on whose water-level stage symphony orchestras and choral groups will perform during the fair. Six pylons that become torches at

night flank the building. Surrounding the temple and the lake is a park planted with pines and cypress, flowering trees and shrubs, while beyond the musical center are the broad, colonnaded federal building and the Spanish California group. Reminiscent of Mayan architecture are the modern pyramids of the "Elephant Towers" that flank the main gate. Beyond the gate is the 400-foot central tower of the fair.