

Tractor Transplants a Forest of Palm Trees

Treasure Island, site of the Golden Gate exposition in 1939, needed a grove of full-grown palm trees. Transplanting a forest of palms—3,200 of them, from ten to sixty-five feet high and weighing as much as thirty-eight tons—calls for plenty of power. Some required two ninety-five horsepower tractors to pull while a third pushed.



Above, a big palm tree is winched down ramp into hole. Left, two tractors haul while a third bulldozes a boxed tree to new location on avenue of Golden Gate exposition. In less than thirty minutes a tree can be unskinned from barge, moved into place and planted.

Giant Crane to Lift Riders in Cages to See Exposition

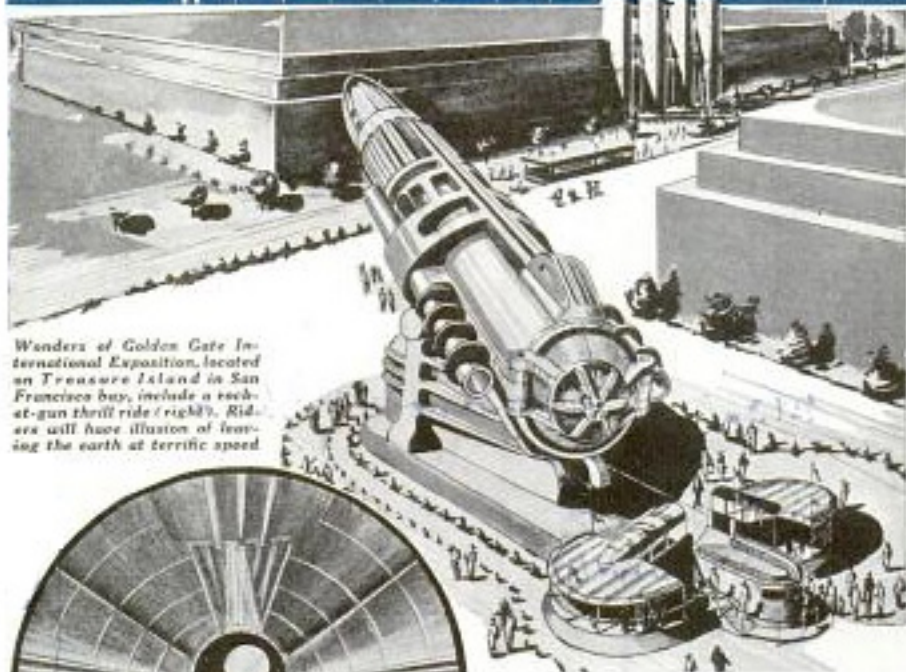


Drawing of huge crane which will lift two cages, loaded with visitors to exposition, high into the air for view of fair

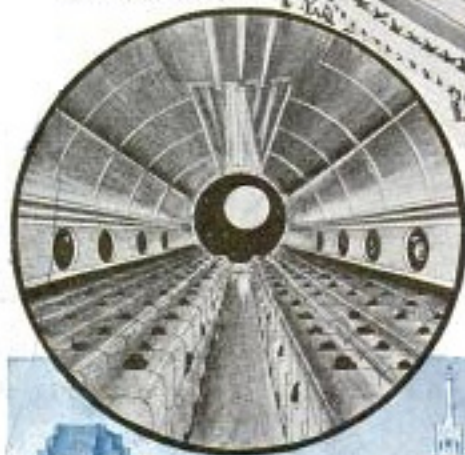
Visitors to the 1939 Golden Gate International Exposition on San Francisco Bay will be given a thrill ride by a giant crane. Swinging two large steel cages 166 feet into the air, the crane will provide a new kind of sky ride. The cages will accommodate twenty-five passengers each and will be swung out over a wide arc as the crane revolves, giving the spectators a dizzy view of the exposition.

TREASURE ISLAND

THRILLERS



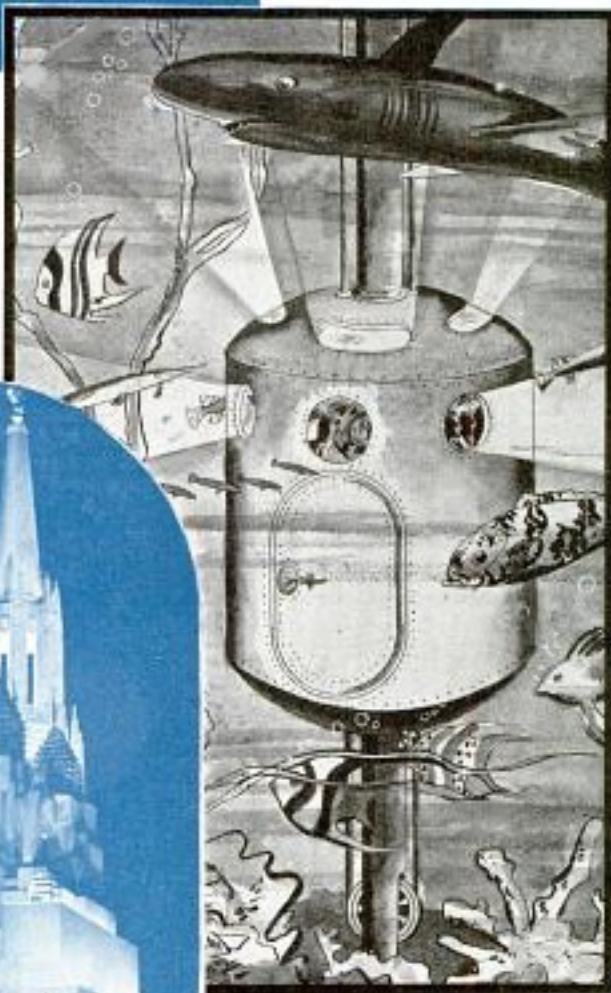
Wonders of Golden Gate International Exposition, located on Treasure Island in San Francisco bay, include a rocket-gun thrill ride (right). Riders will have illusion of leaving the earth at terrific speed



Left, view of 250-passenger compartment of rocket-gun ride. The "ship" is ninety feet long, equipped with portholes through which passengers apparently will see the earth receding. Below, 400-foot "Tower of the Sun" (center of photo), flanked by the main exhibit palaces



Right, another wonder of the exposition will be a steel diving bell which will take visitors into forty feet of shark-infested water. Operated vertically on a steel shaft, the bell will hold ten to fourteen passengers. The illusion of descent to great depths will be obtained through the use of a submarine garden. Built in a salt-water tank, the bell will be forced to the bottom under pressure. Release of pressure will allow the bell to bob to the loading pier on the surface



Left, night view of the "Tower of the Sun" in preliminary tests of \$1,000,000 illumination equipment. Spectacular lighting will make Treasure Island appear as a magic city floating in San Francisco bay. Treasure Island is 8,520 feet long, 3,400 feet wide and stands thirteen feet above sea level. It is located just north of Yerba Buena island, which is midpoint of the \$77,000,000 San Francisco-Oakland Bay bridge. The bridge gives access to the exposition by motor. The exposition is built in the form of a walled city, with a new "Pacific" type of architecture blending old Mayan, Incan, Malayan and Cambodian forms

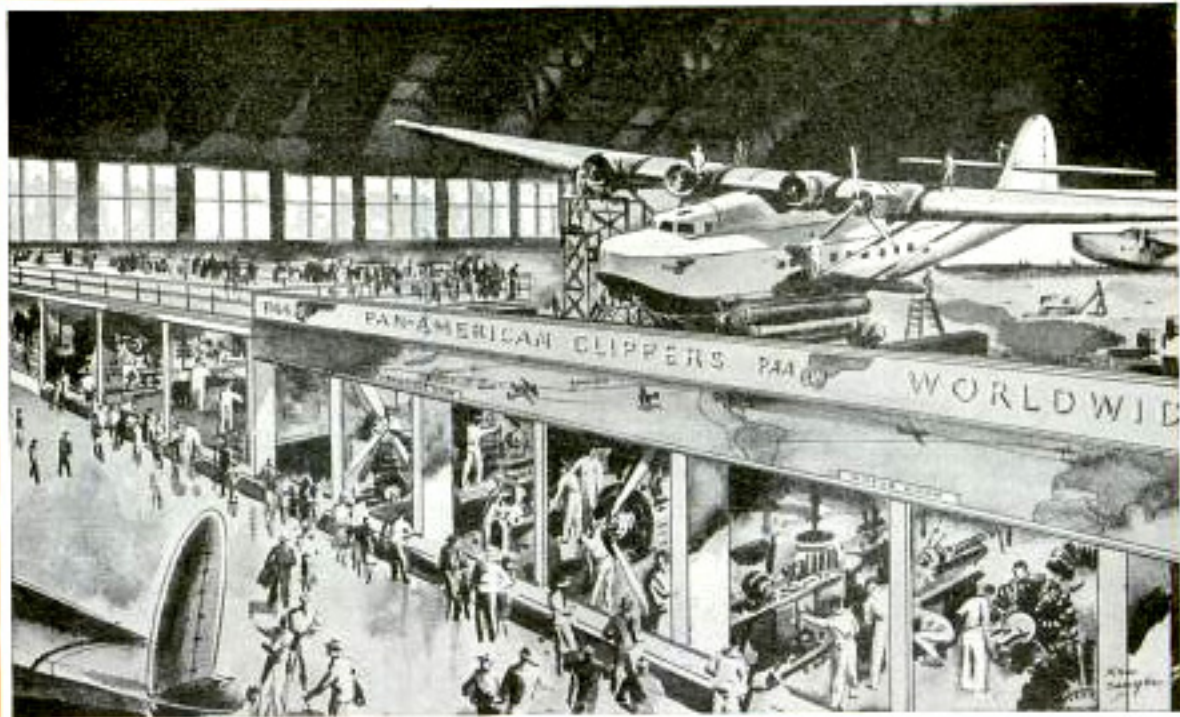
AIR LINE *under* GLASS



Above, Philippine clipper leaving off Treasure Island against a background of Golden Gate Exposition buildings. Clipper ships of Pan American Airways will have here during the exposition. Left, Hall of Air Transportation where Pan American will put its entire trans-pacific air base under glass. This drawing shows a clipper being hoisted out of the water on a cradle for its overhaul in the building.



Treasure Island, San Francisco's municipal airport, as it will appear after Golden Gate Exposition is over. Pan American will base its citizens on the island.



Here is how the "air line under glass" will appear to the visitors at the Golden Gate Exposition on San Francisco bay. Clipper planes will land and take off in the lee of Treasure Island and receive overhauls in this Hall of Air Transportation. Spectators will view all operations through glass panels, as shown here.

"Elephant Trains" Carry Sightseers at Golden Gate Fair

Fantastic elephant-like trains, with the driver's cab replaced by a howdah, transport sightseers at Golden Gate International Exposition. Usually a train has three

trailers, each carrying twenty passengers. Seats are back to back, facing to the right and left of the train, and the conductor has an aisle between the seats. Trailers have

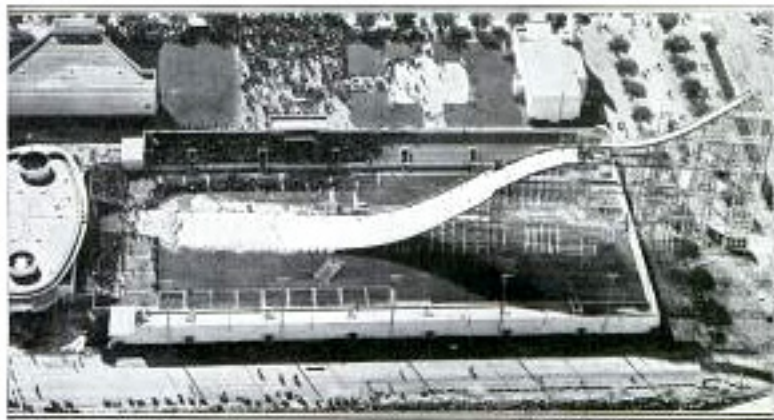
but two wheels at the extreme rear, and steel floor plates overlap at the couplings to form an articulated train of four separate units with only ten wheels. Easy to board, the trailers are built within six inches of the ground. The power unit is an eighty-five horsepower V-eight engine.



Dressed up to resemble a howdah mounted on the back of an elephant, this fantastic tractor pulls open-air trailers at the Golden Gate Exposition

¶ Six states—California, Texas, Florida, Michigan, Pennsylvania and Ohio—and Alaska have more than 100 airports and landing fields in each.

Ski Slide Brings Winter Fun to California Fair



Spectacular ski slide erected on Treasure Island, where toughest ski jumpers will show their skill to Golden Gate fair visitors. Winter sports will compete side by side with summer games

Treasure Island is the summer playground of the Golden Gate exposition, but that is no bar to winter sports. In fact there will be open season for skiers throughout the fair. A lofty ski slide has

been built on the exposition grounds and champion ski jumpers will take off for the entertainment of exposition visitors, vying for interest with the open-air swimming show not many yards away.