

ALL THESE
IMPORTANT FEATURES
Offered in this

COMPLETE POPULAR

ALL WITH GENUINE

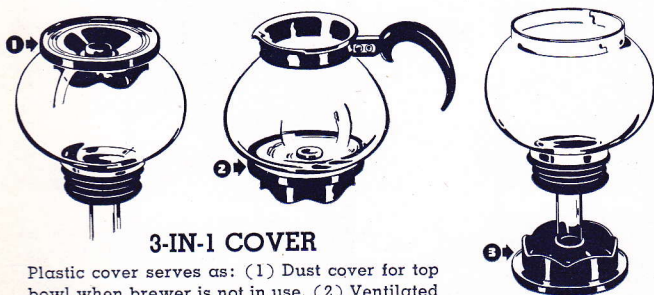
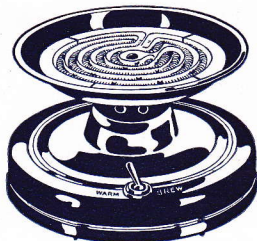
GENUINE PYREX GLASS BOWLS

Bowls of all Westinghouse Coffee Makers are made of famous "Pyrex" glass, your assurance of the very finest quality heat-resisting glass-ware. May be placed over open flame without danger of breakage. Same weight as used in the finest commercial glass coffee brewers.



FAST-HEATING STOVE WITH 2-HEAT SWITCH, INSULATED BASE

550 watt stove gives fast brewing—water comes to a boil in very short time. Then just flip the switch from "Brew" to "Warm" and you automatically get the correct heat to hold coffee at perfect serving temperature during a leisurely meal. Plastic base never gets uncomfortably warm to the touch. Cannot blister fingers or scorch fine finishes or tablecloth.



3-IN-1 COVER

Plastic cover serves as: (1) Dust cover for top bowl when brewer is not in use. (2) Ventilated scorchproof table mat for coffee maker when removed from heater for filtering. (3) Table holder for upper bowl before and after coffee is made.



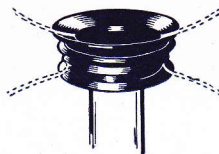
12-CUP 2-HEAT MODEL

Affords extra coffee-making capacity for large families, or for those who do considerable entertaining. In addition to attractive appearance, it offers the advantages of wide-mouth bowls for easy cleaning, extra-wide funnel for faster filtration, patented filter which insures a crystal clear drink, and the clever 3-in-1 cover which serves as dust cover, funnel stand and table mat. Warming heat on the 2-heat stove permits keeping extra coffee warm as long as desired. Includes all the other features listed on this page. Approved by Underwriters' Laboratories.

CATALOG NO. C12M-414, 115 VOLTS

550 watts, 115 volts. Detachable cord and coffee measuring spoon included. Shipping weight, 5 lbs. Standard package, six. Individually packed for re-shipment (no extra charge).

"AUTO-SEAL" BUSHING



No tugging or twisting to insert or remove top bowl. This patented rubber bushing has double "fins" which give a positive seal automatically.

EXTRA-WIDE FUNNEL



Gives faster filtering. Easy to clean and dry by merely rinsing out and drawing a tea towel through the wide funnel.

LOW-PRICED COFFEE MAKER LINE

PYREX GLASS BOWLS AND 2-HEAT CONTROL



8-CUP 2-HEAT MODEL

This is the ideal coffee maker for the average family. Makes from 4 to 8 cups of delicious coffee. The ease with which the upper bowl may be inserted and removed from the lower bowl, and the handy 3-in-1 cover, which permits the upper bowl to be placed upright on the table after coffee is brewed—make this model ideal for making steaming hot coffee right at the table during breakfast, luncheon or dinner. Includes all the features listed on this page. Approved by Underwriters' Laboratories.

CATALOG NO. C8M-414, 115 VOLTS

550 watts. 115 volts. Detachable cord and coffee measuring spoon included. Shipping weight, 5 lbs. Standard package, six. Individually packed for re-shipment (no extra charge).



6-CUP 2-HEAT MODEL

Specially designed for smaller families where larger coffee-making capacity is not required. Offers all the advantages of perfectly brewed, crystal-clear coffee at very moderate cost. Includes the same fast heating electric stove with 2-heat control as furnished with the larger models. Also includes all other features shown on this page. Approved by Underwriters' Laboratories.

CATALOG NO. C6M-414, 115 VOLTS

550 watts. 115 volts. Detachable cord and coffee measuring spoon included. Shipping weight, 5 lbs. Standard package, six. Individually packed for re-shipment (no extra charge).

WIDE, EASY-CLEAN NECK



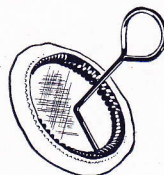
Easy to fill, easy to clean. Dishcloth or towel may be inserted inside either top or bottom bowl for thorough cleaning and drying.

DECANTER COVER



Plastic cover hinged to neck of bottom bowl, flips into place at a touch of the finger, to keep coffee warm after it is brewed. Coffee may be poured without lifting cover.

PATENTED FILTER



No wet strings to untie, no chains or spring-handles to fumble with. Filter cloth is merely "rolled" on or off the flexible spring filter head. Double thickness cloth, plus patented non-slip filter head, permit using extra fine grind of coffee.

COFFEE MEASURING SPOON



Plastic measuring spoon included with each Westinghouse Coffee Maker. Gives the same accurate measure every time. Can be kept right in coffee container—handy to use.

WESTINGHOUSE COFFEE MAKERS

THE ECONOMY LINE



8-CUP SINGLE HEAT MODEL

A low-priced coffee maker with single heat, chrome finished stove. Offers all the important Westinghouse features . . . genuine Pyrex Glass bowls; wide, easy-to-clean mouths; 3-in-1 plastic cover; "Auto-Seal" bushing; extra wide funnel; patented filter; coffee measuring spoon. See inside pages for illustrations of these features.

CATALOG NUMBER C8L-414, 115 VOLTS

550 watts, 115 volts. Detachable cord and coffee measuring spoon included. Shipping weight 4½ lbs. Standard package, six. Individually packed for re-shipment (no extra charge).



8-CUP RANGE MODEL

Designed for use on electric or gas range. No electric stove furnished. Bowls of genuine Pyrex glass can be used over open flame. Includes all these other important Westinghouse features . . . wide, easy-to-clean bowls; 3-in-1 plastic cover; "Auto-Seal" bushing; extra wide funnel; patented filter; coffee measuring spoon. See inside pages for illustrations of features.

CATALOG NO. PM-114

Shipping weight, 3 lbs. Standard package, six. Individually packed for re-shipment (no extra charge).

National Defense, with which we are co-operating fully, may require us to depart from certain details of the specifications set forth in this catalog. Should any such departure be necessary for conservation purposes, you may be reasonably assured the alternative materials or deviations in specifications will be fully adequate to maintain the standards which this catalog sheet describes.



Every house needs
Westinghouse



COFFEE MAKERS

FOR DELICIOUS FULL-FLAVORED COFFEE EVERY TIME

COOL BAKELITE COVER

Fits both top and bottom bowls—keeps coffee warm when serving. Holds upper bowl after coffee is brewed.

WIDE MOUTH BOWLS FOR EASY CLEANING

On both top and bottom bowls, mouth is wide enough to admit hand for easy cleaning.

NEW ALL-AROUND-HANDLE BASE

Triple-plated chrome base, with all-around handle so that coffee maker may be easily picked up from any angle. Cord more easily removable.

SURE FIT FILTER HOLDER

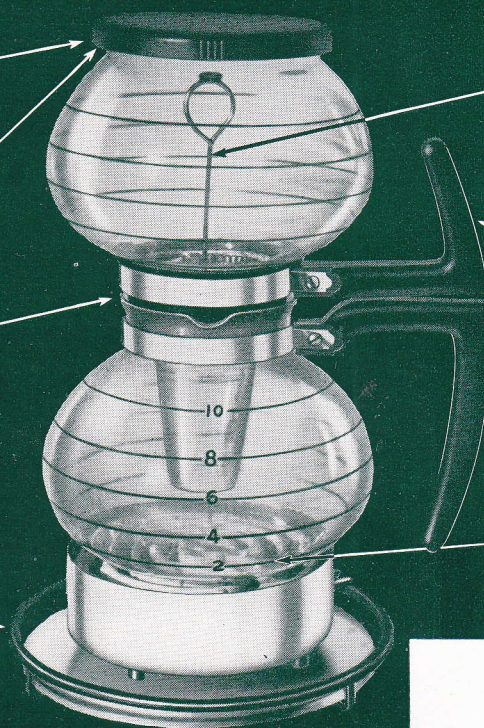
Gives positive seal... has spring holder to keep filter-cloth in place while coffee is brewing.

DOUBLE BAKELITE HANDLES

Cool handles on both top and bottom bowls facilitate removal of top bowl after coffee is brewed.

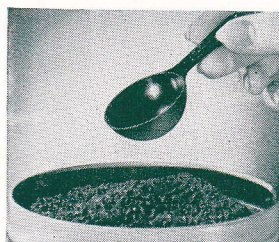
HEAT-RETAINING BRICK TYPE ELEMENT

Retains heat, keeps coffee warm longer, provides more economical operation.



PLUS FEATURES

10-CUP DE LUXE COFFEE MAKER



Maroon Plastic Coffee Measuring Spoon included with each PM-104 Coffee Maker.

USES: Makes from 2 to 10 cups of uniformly delicious, full-flavored coffee. Piping hot water rises to upper bowl; vacuum draws aromatic coffee brew to lower bowl for serving. Markings on bowl indicate water needed for desired number of cups. Also has many other uses: Makes tea, delicious soup, and hot chocolate, boils eggs, water, etc. (using lower bowl only). Heating unit may also be used as an electric hot plate. Approved by Underwriters' Laboratories.

CATALOG NO. PM-104

Specifications: Lustrous black, crystal and chrome combination. 600 watts. Includes detachable cord with miniature plug. Shipping weight, 6 lbs. Standard package, 6. For A-C. or D-C. operation.

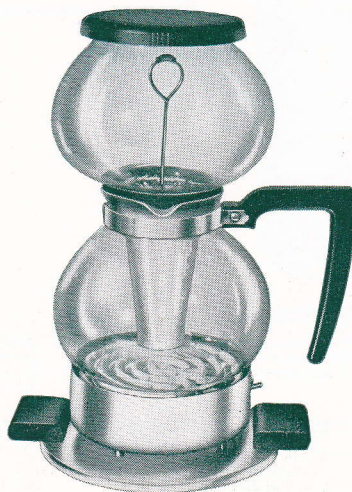
7-CUP STANDARD COFFEE MAKER

USES: Same as De Luxe model, except 8-cup capacity.

Chrome finished base with black wood handles. Black bakelite bowl handle, designed for easy pouring. Bakelite cover fits both top and bottom bowls. Heat retaining brick-type element. Wide mouth bowls for easy cleaning. Approved by Underwriters' Laboratories.

CATALOG NO. PM-94, 115 VOLTS

Specifications: 600 watts. Includes detachable cord with miniature plug. Shipping weight, 6 lbs. Standard package, 6. For A-C. or D-C. operation.



EASY TO REMOVE top bowl by grasping both handles and applying gentle pressure. No pulling or tugging, no burned fingers, no pads or holders necessary.



COVER FITS BOTH BOWLS—used on top bowl while coffee is being made, then used as cover for lower receptacle to keep coffee warm while serving. Also holds upper bowl and grounds after coffee is brewed.

● **The Same Perfect Results Every Time**—(1) water goes up at exactly the right temperature (2) passes over coffee only once, extracting just the volatile, flavorful aromatic oils, leaving behind all bitter or indigestible acids. (3) Drawn through filter-cloth by vacuum, which means perfect, clear coffee. (4) No contact with metal.

● **Many Other Uses**—makes tea equally well, using only lower receptacle. Also makes delicious soup, hot chocolate, boils eggs, water, etc. Heating unit may also be used as an electric hot plate.

● **Wide Mouth Means Easier Cleaning**—on both top and bottom receptacles, opening is wide enough to admit hand for thorough cleaning. Crystal clear heat-proof glass.

● **Finest Porcelain Heater Brick Retains Heat**—keeps coffee warm longer.

Every house needs
Westinghouse



PERCOLATORS

GRACEFUL IN DESIGN • BUILT FOR LONG LIFE

**GRACEFUL
MODERN STYLING**
Distinctive appearance
has been combined with
utility—for entertaining
or everyday use.

**COOL EBONIZED
HANDLE**

Lends pleasing contrast
to the gleaming chrome
finish of the percolator
itself. Designed for easy
pouring.

**SCRATCH-PROOF
BAKELITE FEET**

Will not injure the finest
table finish.

SPRING COVER

So designed that it will
not fall off while coffee
is being poured.

NONDRIP SPOUT

Pours easier—every
drop in the cup. Popular
"tea spout" pattern.

**CHROME-PLATED
INTERIOR**

Easier to clean. Elim-
inates bitter, metallic
taste. Assures longer
life.

**CHROME-PLATED
COPPER BODY**

Tarnish-proof. Always
bright, easy to keep
clean. Will maintain
beautiful appearance
for life of percolator.

PLUS FEATURES

- **Fuse Protection**—prevents damage should per-
colator become overheated or accidentally run dry.
Extra fuse furnished with each unit.
- **Solid Copper Bodies**—finished inside and out
in lustrous, tarnish-proof chrome plate. Stays bright
—easy to clean.
- **Recessed Well Design**—makes as few as two cups
of coffee just as deliciously and efficiently as the full
capacity.
- **Long Life Heating Element**—finest nickel
chrome wire. Makes coffee quickly.
- **Cold-Water-Type Pump**—coffee starts per-
colating within seconds after plugging in percolator.
- **Non-Drip Spouts** pour every drop into the cup.
Prevents dripping and staining. Pours easier!
- **Extra Coffee** can be made by removing coffee
basket after percolation is complete and adding hot
water.
- **Underwriters' Approval**—on all percolators.

10-CUP CHROME PERCOLATOR

This beautifully styled model includes all the quality features
listed above and at right—to give perfect coffee-making re-
sults, lasting beauty and long life.

CATALOG NO. PG-24A 115 VOLTS

Specifications: 350 watts. Detachable cord and miniature plug included.
Shipping weight, 5 lbs. Standard package, 6. For A-C. or D-C. operation.



8-CUP CHROME

Same distinctive design and quality features
as PG-24A model, including all Plus Fea-
tures listed at right. Chrome plate finish,
Ebonized handle.

CATALOG NUMBER PG-14A, 115 VOLTS

350 watts. Detachable cord and miniature
plug included. Shipping weight, 5 lbs.
Standard package, 6. For A-C. or D-C. use.

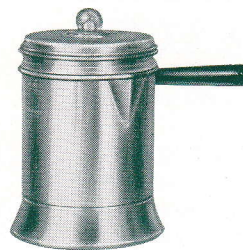


7-CUP CHROME

A beautiful modern design with all quality
and Plus Features listed above and at right.
Equally suitable for entertaining or every-
day use.

CATALOG NUMBER PG-34, 115 VOLTS

350 watts. Detachable cord and miniature
plug included. Shipping weight 5 lbs.
Standard package, 6. For A-C. or D-C. use.



3-CUP ALUMINUM

Ideal for small capacity, everyday use.
Tarnish-proof aluminum body, with nondrip
pouring lip. Cool bakelite handle, long
life element.

CATALOG NO. PNA-44, 115 VOLTS

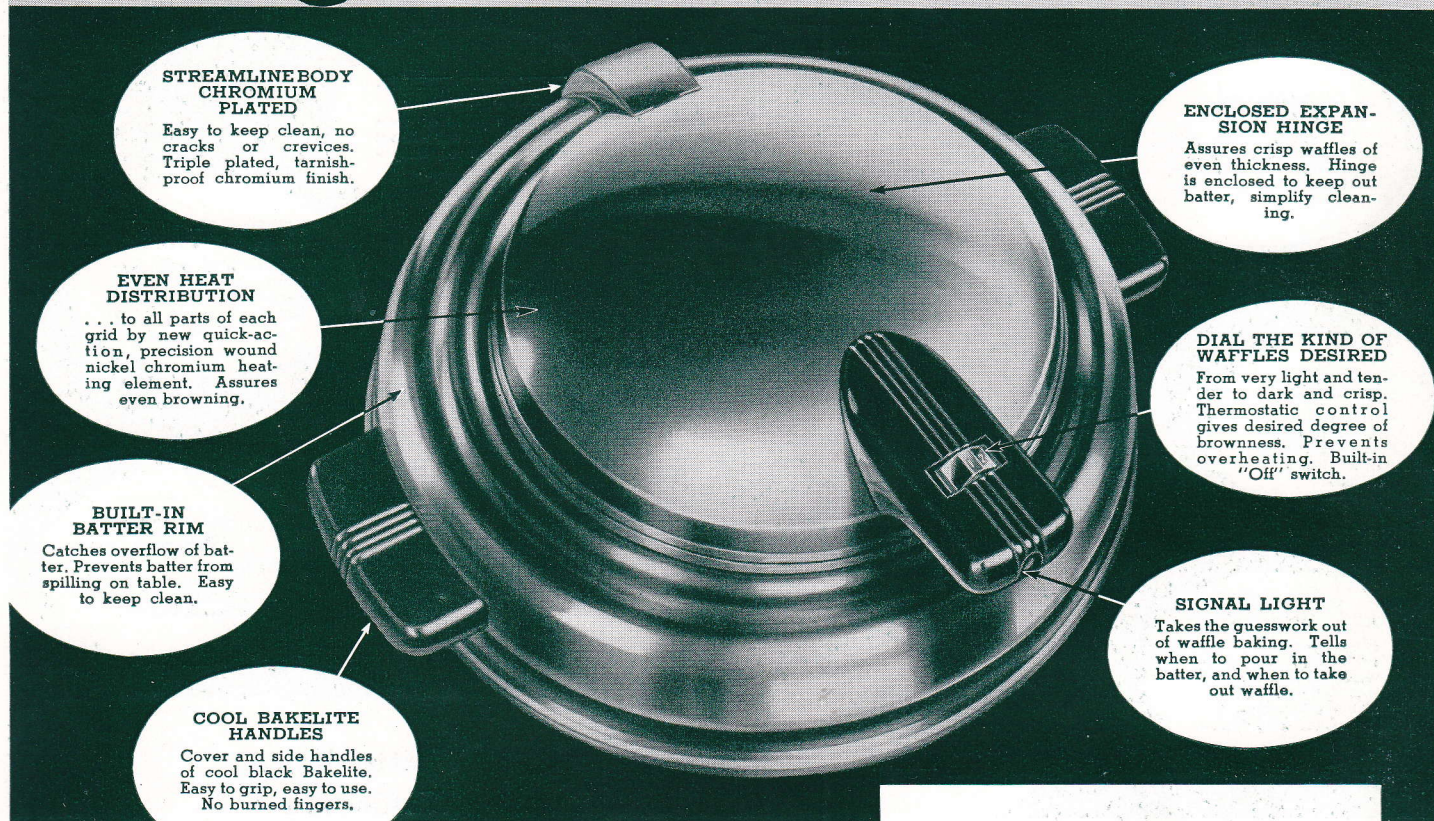
250 watts. NO CORD INCLUDED. Individ-
ual shipping weight $\frac{3}{4}$ lbs. Packed 12 in-
dividual cartons in shipping carton.

Every house needs
Westinghouse



WAFFLE BAKERS

FAST BAKING • CONVENIENT FEATURES • STREAMLINED BEAUTY



**STREAMLINE BODY
CHROMIUM
PLATED**

Easy to keep clean, no cracks or crevices. Triple plated, tarnish-proof chromium finish.

**EVEN HEAT
DISTRIBUTION**

... to all parts of each grid by new quick-action, precision wound nickel chromium heating element. Assures even browning.

**BUILT-IN
BATTER RIM**

Catches overflow of batter. Prevents batter from spilling on table. Easy to keep clean.

**COOL BAKELITE
HANDLES**

Cover and side handles of cool black Bakelite. Easy to grip, easy to use. No burned fingers.

**ENCLOSED EXPAN-
SION HINGE**

Assures crisp waffles of even thickness. Hinge is enclosed to keep out batter, simplify cleaning.

**DIAL THE KIND OF
WAFFLES DESIRED**

From very light and tender to dark and crisp. Thermostatic control gives desired degree of brownness. Prevents overheating. Built-in "Off" switch.

SIGNAL LIGHT

Takes the guesswork out of waffle baking. Tells when to pour in the batter, and when to take out waffle.

ADJUST-O-MATIC WAFFLE BAKER

USES: Takes the guesswork out of waffle baking. Tells when to pour in the batter and when to take the waffle out. Makes perfect waffles, light or dark, automatically—27 delicious and different varieties. Complete recipe and instruction book with each Waffle Baker. The features and smart appearance of this Waffle Baker make it popular everywhere. Approved by Underwriters' Laboratories.

CATALOG NO. WSA-24

Specifications: 750 watts. Detachable cord and miniature plug included. Shipping weight, 8 lbs. Standard package, 6. A-C. only.



HEAT-INDICATING WAFFLE BAKER

A popular priced waffle iron that combines utility with good looks. Covered expansion hinge assures waffles of even thickness—is easy to clean. Built-in batter rim around lower grid catches batter overflow. Recessed heat indicator tells when grids are at proper baking temperature. Fast heating element assures evenly browned waffles. Tarnish-proof chrome finish. Cool brown bakelite handles. Approved by Underwriters' Laboratories.

CATALOG NO. WF-24

Specifications: 600 watts. Detachable cord with miniature plug included. Shipping weight, 6 lbs. Standard package, 12. A-C. or D-C. operation.

PLUS FEATURES

- **Bakes Plate Size Waffles** ... seven inches in diameter, creased for easy breaking into halves and quarters.
- **Pretreated Grids.** Made of cast solid aluminum. Eliminate sticking, ready for immediate use. No greasing. No curing. No "breaking-in".
- **Scientifically Matched Heating Element.** Top and bottom elements matched to insure evenly browned waffles on both sides.
- **Quick-Heat Element Design.** Insures faster heating and faster baking with less electricity. Also insures long life ... and even heat distribution to all parts of each grid.
- **Long Service Assured** ... by special heavy construction. Triple-plated ... heavy tarnish-proof chrome over layers of copper and nickel. Always bright and easy to keep clean.
- **Scratch-Proof Feet** ... will not damage table tops.
- **Complete Recipe Book** ... 24-page book of directions and tempting recipes packed with each waffle baker.

Every house needs
Westinghouse



TWIN WAFFLE BAKER

MAKES TWO WAFFLES AT A TIME • NEW FEATURES

BUILT-IN BATTER RIM

... around lower grid catches batter overflow, prevents spilling on table. Easy to clean.

SMART STREAM- LINE DESIGN

To harmonize with the finest table settings. No cracks or crevices, easy to keep clean. Popular new low design.

ENCLOSED EXPAN- SION HINGES

Assure waffles of even thickness. Batter will not get into hinges, simplifies cleaning.

TARNISH-PROOF CHROME FINISH

Triple-plated with lustrous chromium over copper and nickel. Stays bright, easy to keep clean.

EXTRA HEAVY CONSTRUCTION

One-piece base of drawn steel. Finest type fully guaranteed nickel-chromium heating element

INDIVIDUAL HEAT INDICATORS

A separate one for each grid. Take the guesswork out of waffle baking. Tell when grids are at correct baking temperature. Easy to see.

SCRATCH-PROOF BAKELITE FEET

Will not scratch or mar highly polished table finishes.

COOL BAKELITE HANDLES

Lifting and side handles of cool black Bakelite. Easy to grasp. Prevent burned fingers.



TWIN WAFFLE BAKER

With Individual Heat Indicators

USES: Bakes 2 delicious, evenly browned waffles at the same time. Gives you two waffles with one baking—saves time. In addition to waffles, bakes 27 different varieties of waffle-ized foods such as French Toast, omelettes, chocolate brownies, short cake and dozens of other tempting dishes.

CATALOG NUMBER WFT-14

Specifications: 660 Watts. Detachable cord and miniature plug included. Shipping weight, 8 lbs. Standard package, 6. A-C. or D-C. operation.



TWO WAFFLES AT ONCE

Bakes two generous sized waffles at one time. Deep grids turn out full size waffle baked to a rich, golden brown.



HEAT INDICATORS

on each grid tell when correct baking temperature is reached. Tells when to pour batter. Easily seen from any angle.

Westinghouse Waffle Baker

PLUS FEATURES

- **Two Waffles At Once** ... Bakes one waffle or two at a time. Enough for four generous servings.
- **Pretreated Grids.** Never need greasing, ready for immediate use. Made of cast solid aluminum. No sticking, no curing, no "breaking in".
- **Scientifically Matched Heating Elements** assure evenly browned waffles top and bottom. Designed to give even heat distribution to all parts of the grids.
- **Long Service Assured** ... by extra heavy construction and finest quality nickel chromium wire heating elements, fully guaranteed.
- **24-Page Recipe Book** included with each waffle baker. Gives complete directions and 27 different varieties of waffle recipes.