

ALPHABETICAL LIST OF PARTS

PARTS CATALOG

for  
**WURLITZER**  
*Model 1100*  
**PHONOGRAPH**

AND  
MODEL 227 AUXILIARY  
AMPLIFIER

---

## ALPHABETICAL LIST OF ILLUSTRATIONS

TITLE	FIGURE	PAGE
Actuating Lever Assembly . . . . .	14	19
Amplifier, Model 506 . . . . .	29	37
Auxiliary Amplifier, Model 227 . . . . .	31	41
Clutch Trip Assembly . . . . .	8	13
Coin Register Mechanism . . . . .	2	15
Electric Selector Drum . . . . .	21	25
Encore Program Selector Assembly . . . . .	25	30
Front Door Assembly, Front View . . . . .	22	27
Front Door Assembly, Rear View . . . . .	23	28
Front Frame Assembly . . . . .	4	10
Junction Box . . . . .	20	24
Knee Action and Rod Assembly . . . . .	16	20
Main Cam Shaft Assembly . . . . .	9	14
Motor, Flexible Coupling and Bracket Assembly . . . . .	18	22
Mounting Assemblies . . . . .	26	34
Moving Light Assemblies . . . . .	24	29
Pre-Amplifier . . . . .	30	40
Rear Frame Assembly . . . . .	5	11
Record Play Counter Assembly . . . . .	19	23
Record Tray Stack, Stabilizer and Selector Rod Assembly . . . . .	13	18
Return Arm, Feed in Lever and Electrical Trip Assembly . . . . .	11	16
Rotary Arm Assembly . . . . .	15	20
Selector Shaft Assembly . . . . .	10	15
Shafts-Turntable Lift Arm and Roller Arm Assembly . . . . .	7	13
Slug Rejector Assembly . . . . .	1	4
Tone Arm Assembly, Shelf and Chassis Spring Mounts . . . . .	12	17
Top Frame Assembly . . . . .	3	9
Trim Assemblies . . . . .	27	35
Turntable Lift Arm and Roller Arm Assembly . . . . .	6	12
Turntable Shaft, Record Tray Stop Bar and Oil Tube Assembly . . . . .	17	21
Volume Control Unit . . . . .	28	36

This Parts Catalog has been compiled to simplify the ordering of parts for the Wurlitzer Model 1100 Commercial Phonograph. Its primary purpose is to give the name and part number of each part and to clearly indicate them in their assembled position.

All related assemblies have been grouped as indicated in the Alphabetical List of Illustrations on the preceding page. Two Key Illustrations are provided on the following pages to further aid in locating parts.

When ordering, make sure that the part number which you select includes the entire assembly that you need. It may be necessary to order two or more parts to complete the assembly that you require.

Milton A. Bartels  
General Service Manager  
Rudolph Wurlitzer Company  
North Tonawanda, New York

BE SURE TO INCLUDE:

1. Part Number
2. Instrument
3. Model Number
4. Quantity
5. Authorized Signature



ELECTRIC SELECTOR DRUM  
FIGURE 21

FRONT DOOR ASSEMBLY  
FIGURE 22 FIGURE 23

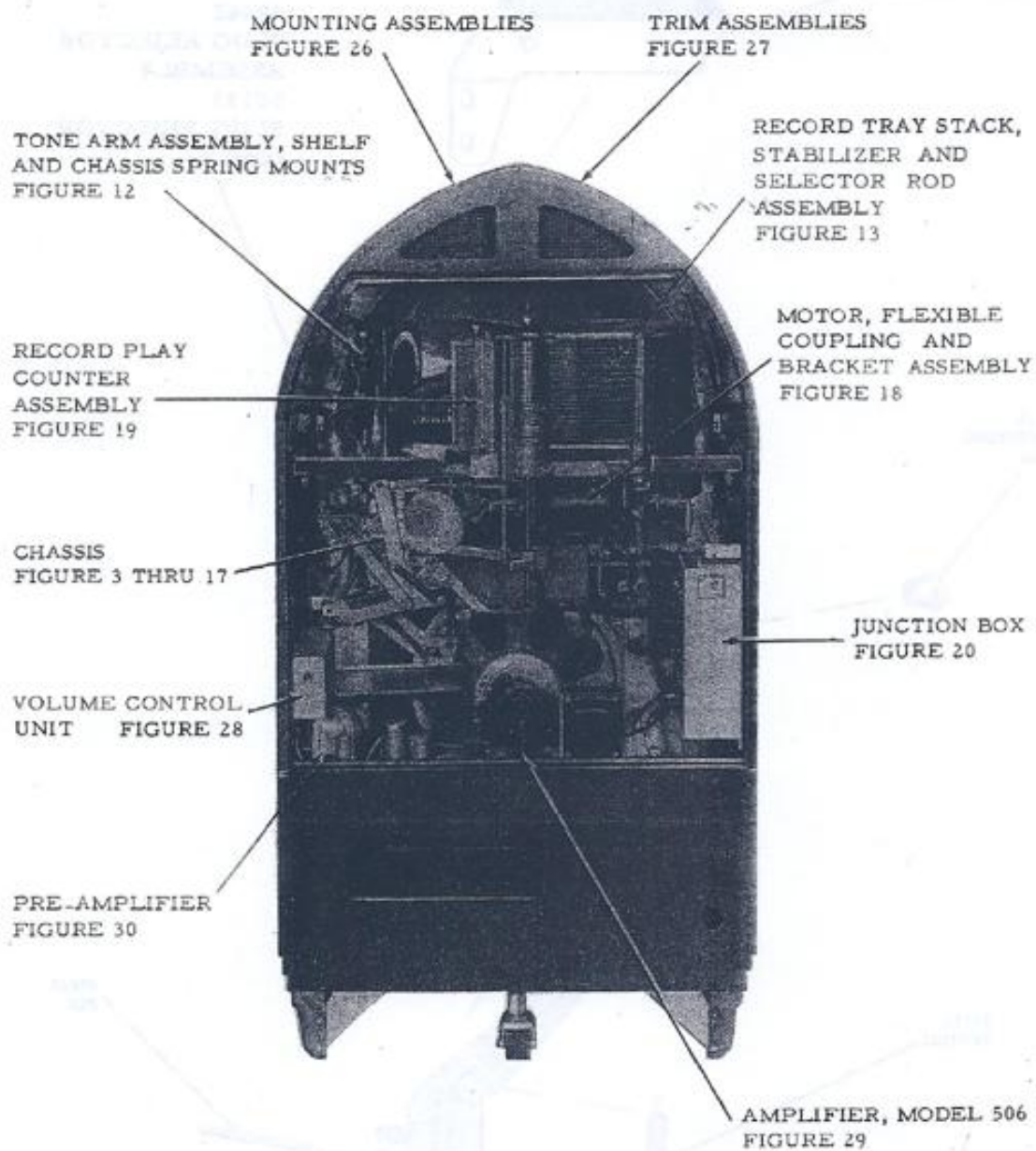
ENCORE PROGRAM SELECTOR ASSEMBLY  
FIGURE 25

SLUG REJECTOR ASSEMBLY  
FIGURE 1

COIN REGISTER MECHANISM  
FIGURE 2

MOVING LIGHT ASSEMBLIES  
FIGURE 24

Key Illustration



Key Illustration

49949  
COIN HOPPER AND  
SUPPORT ASSEMBLY

49442  
SLUG REJECTOR  
ASSEMBLY  
50133  
SLUG REJECTOR  
(ONLY)

50139  
ADJUSTING  
CAM

50151  
SPRING

46191  
SPRING PIN

49823  
PIN

49829  
ARM AND PIN  
ASSEMBLY

Figure 1-Slug Rejector Assembly



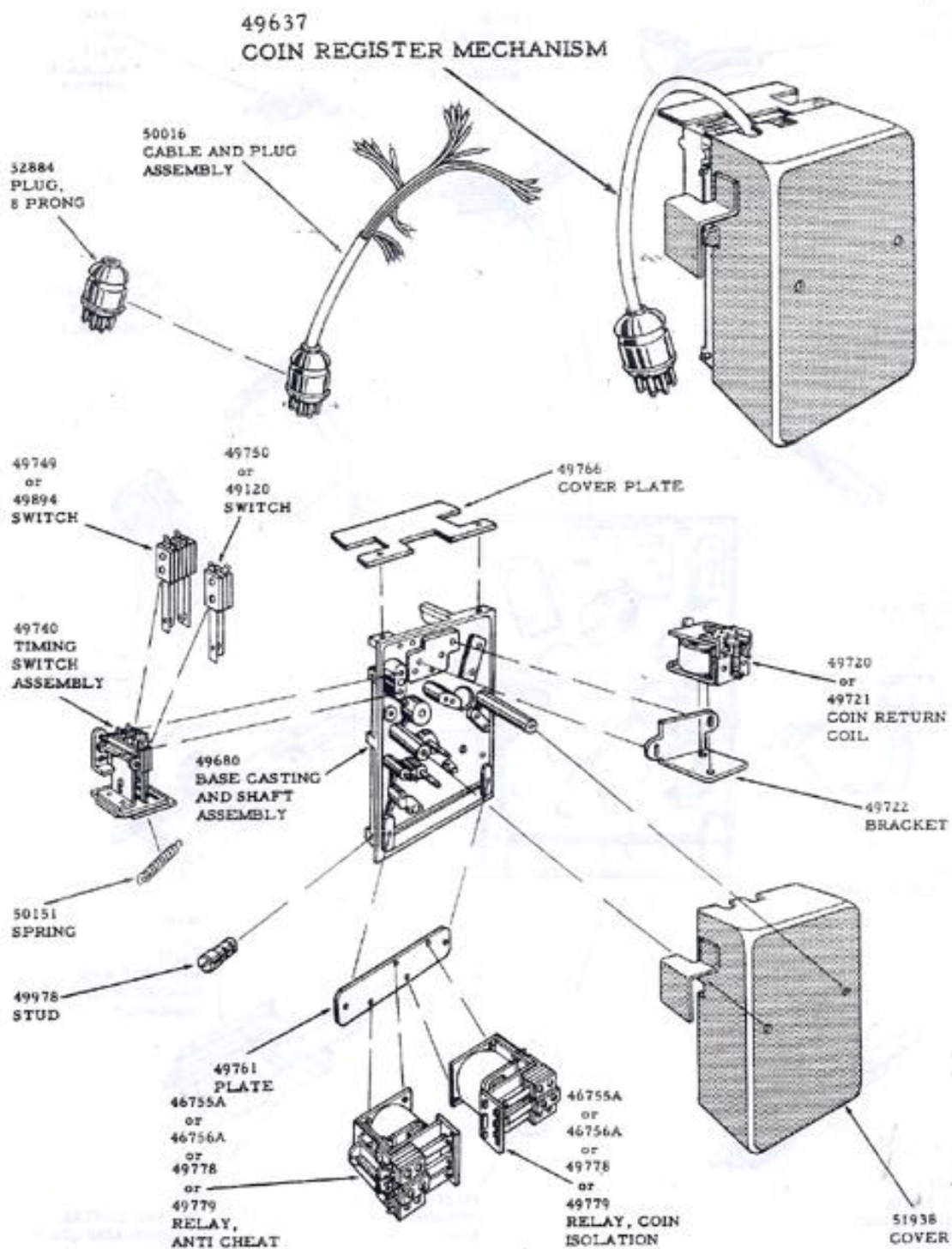


Figure 2-Coin Register Mechanism  
Sheet 1 of 4 Sheets

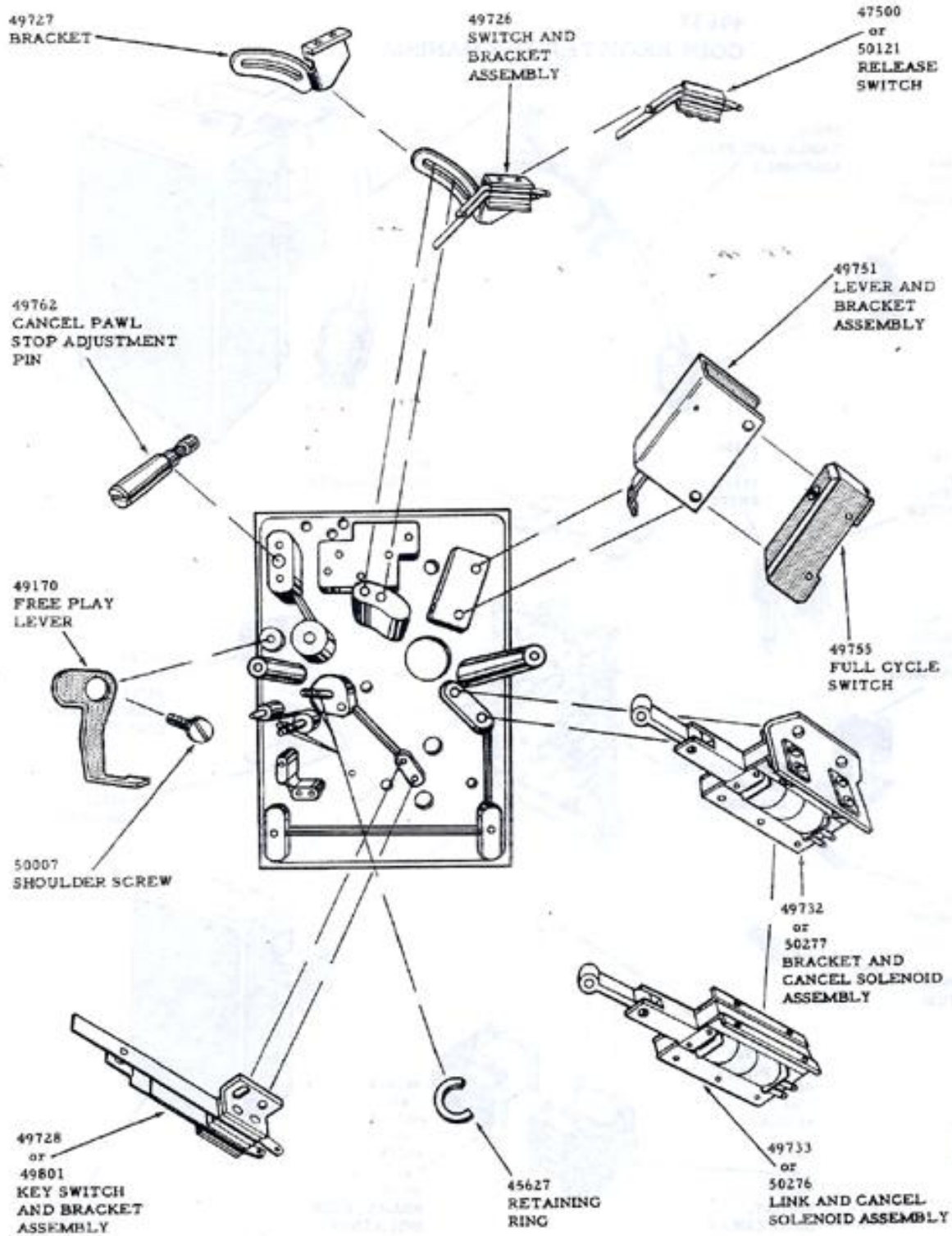


Figure 2-Coin Register Mechanism  
Sheet 2 of 4 Sheets



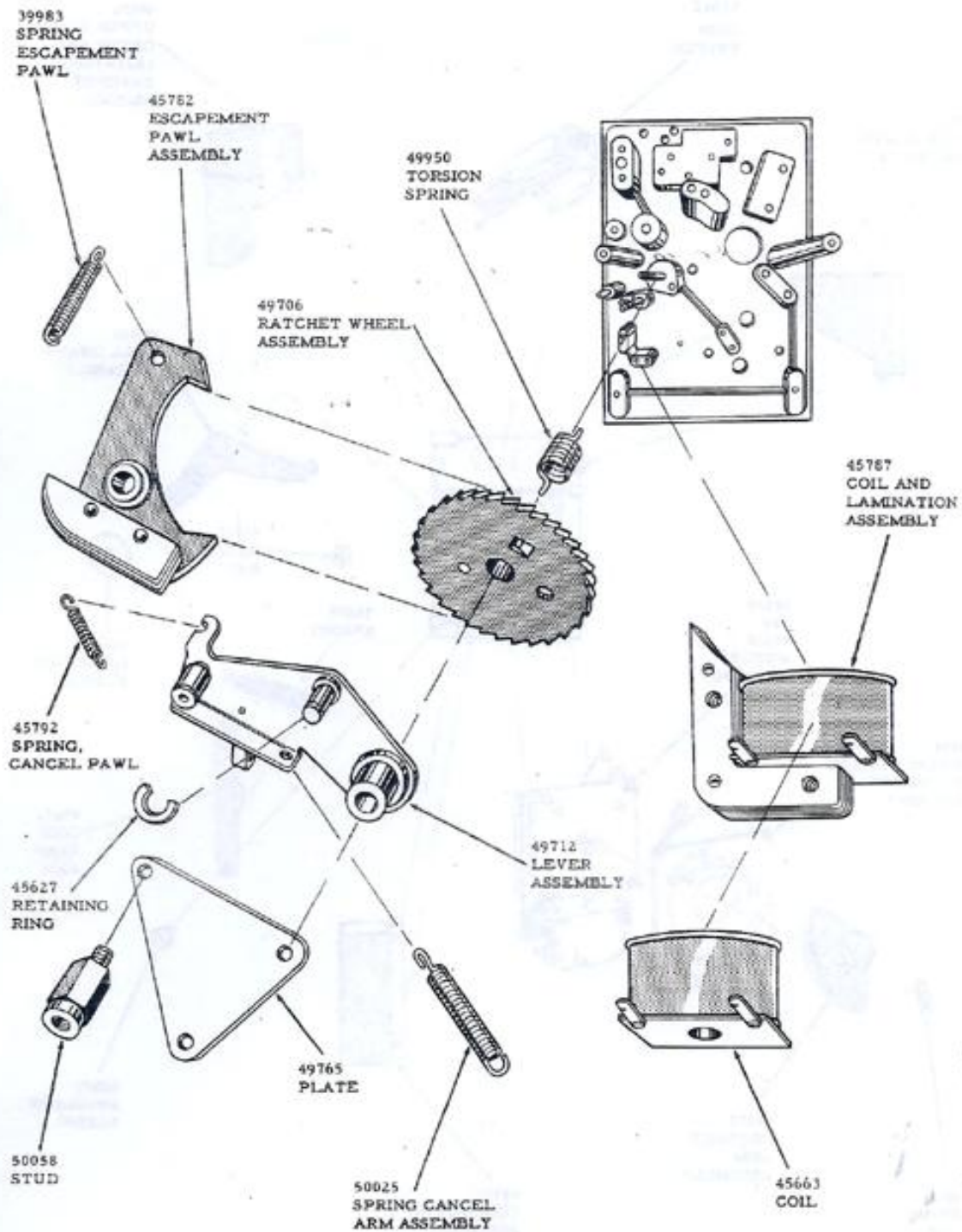


Figure 2.-Coin Register Mechanism  
Sheet 3 of 4 Sheets

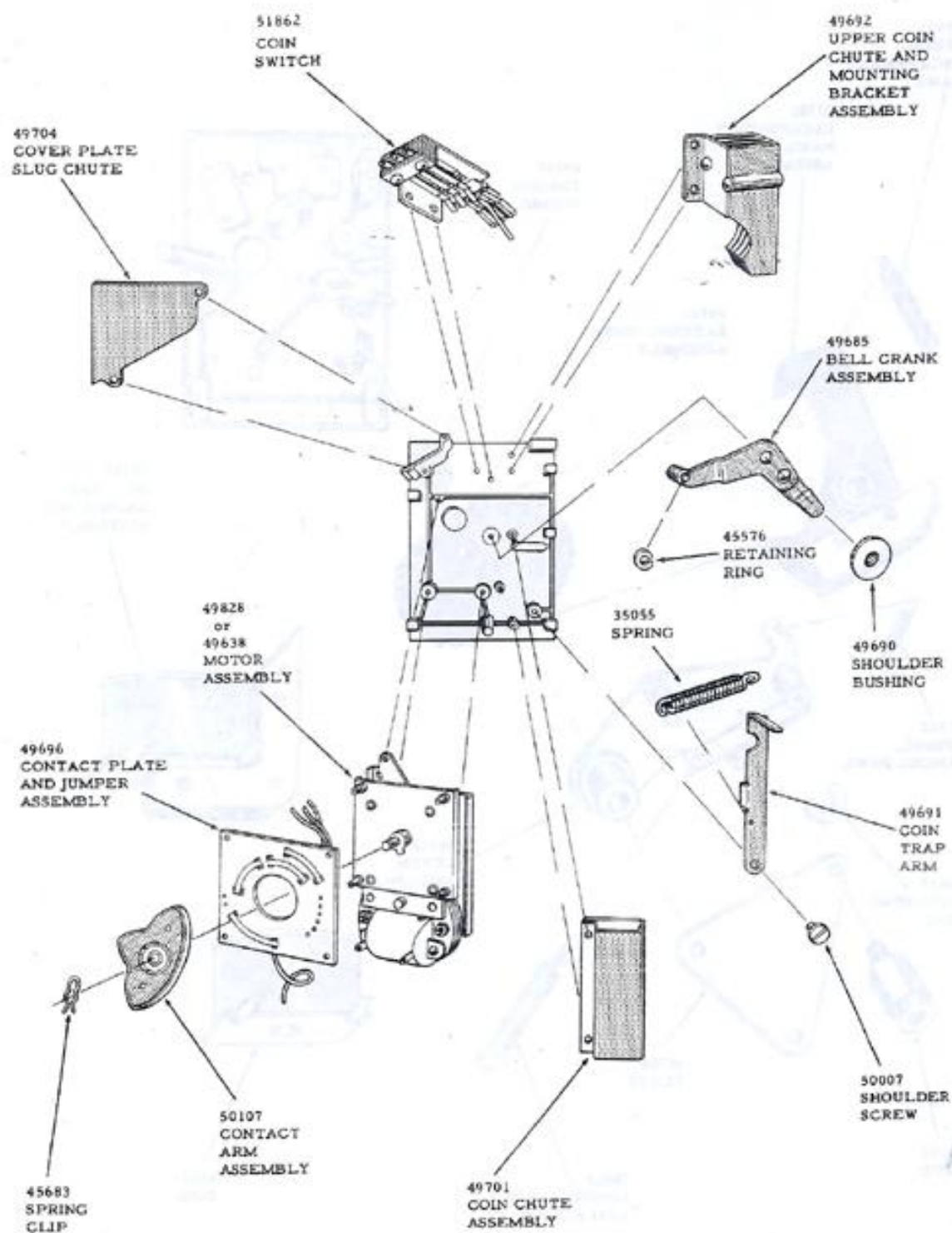


Figure 2-Coin Register Mechanism  
Sheet 4 of 4 Sheets

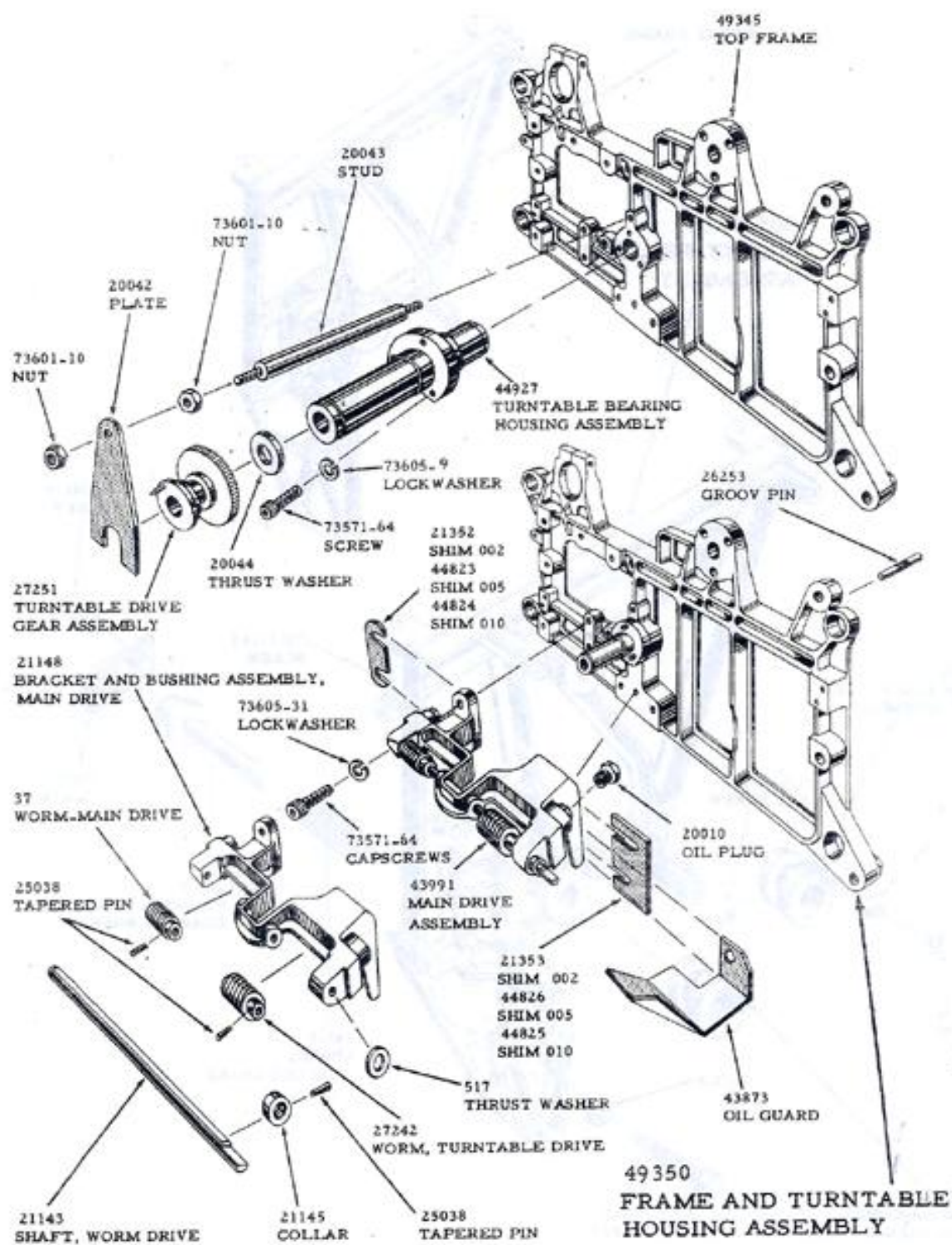


Figure 3-Top Frame Assembly



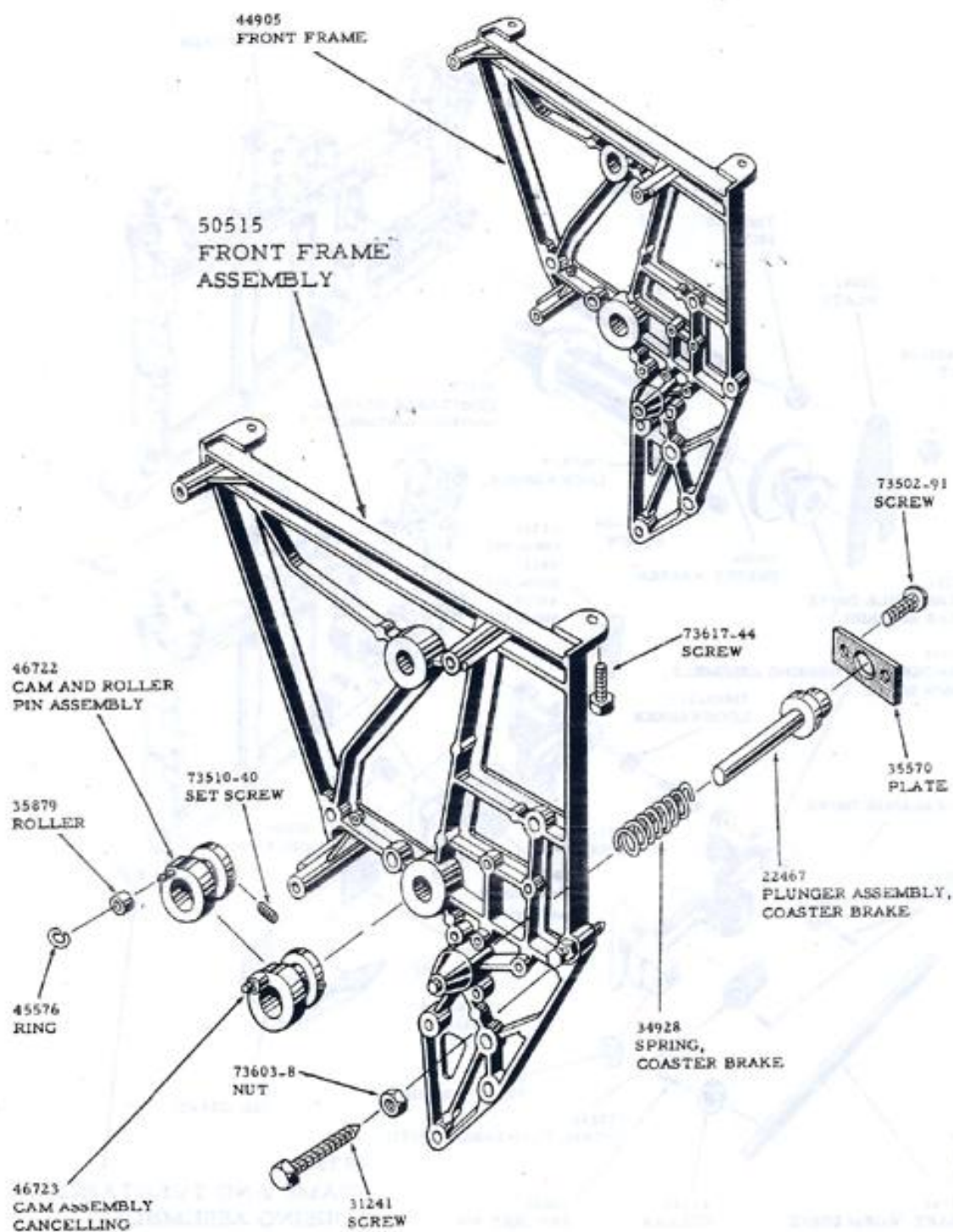


Figure 4-Front Frame Assembly